

FOSSILS OF SPRING HILL

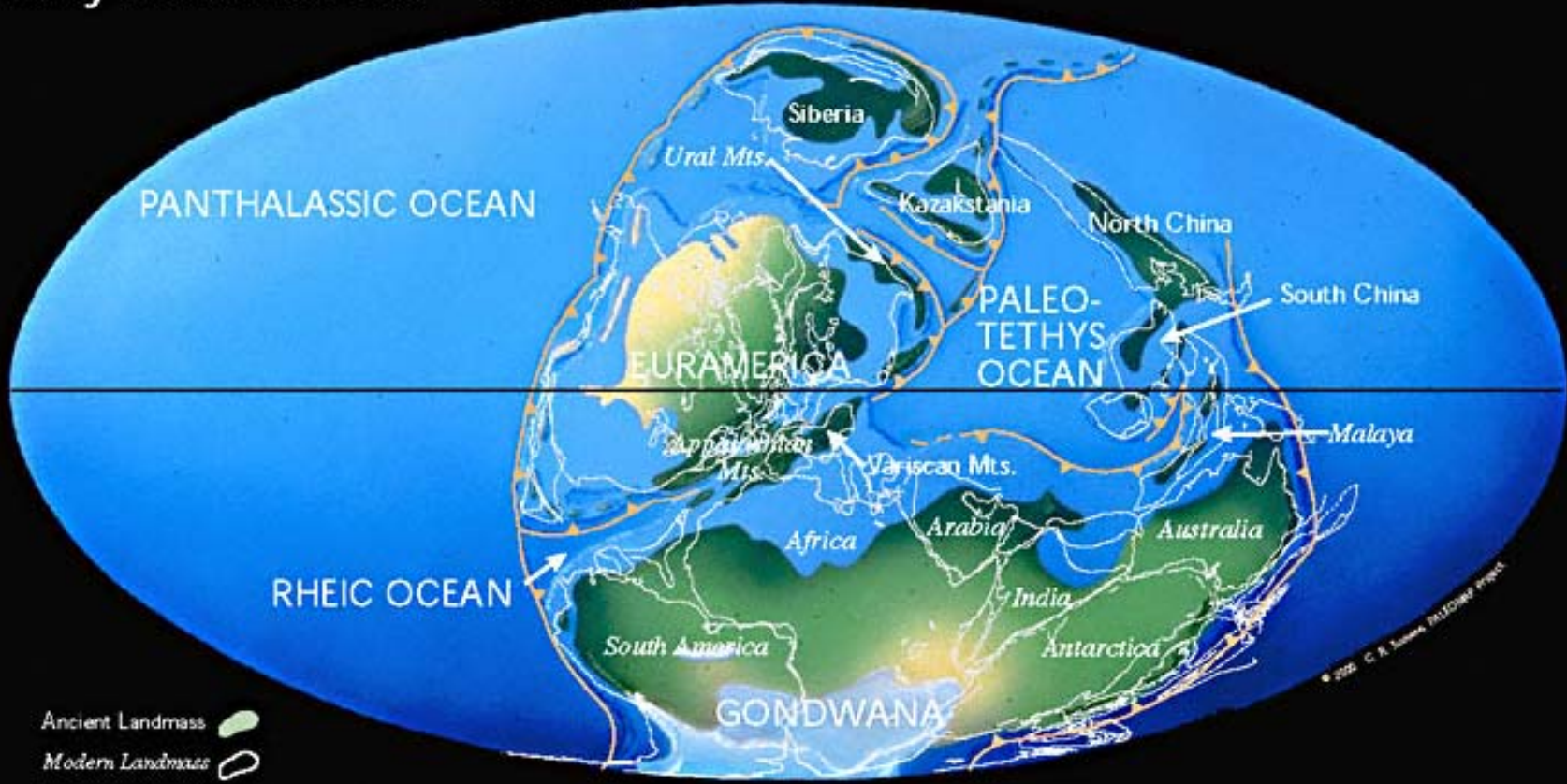
DISCOVERIES





AND

INFORMATION PROVIDED BY

BARBRA MCCABE AND TERRY KURODA

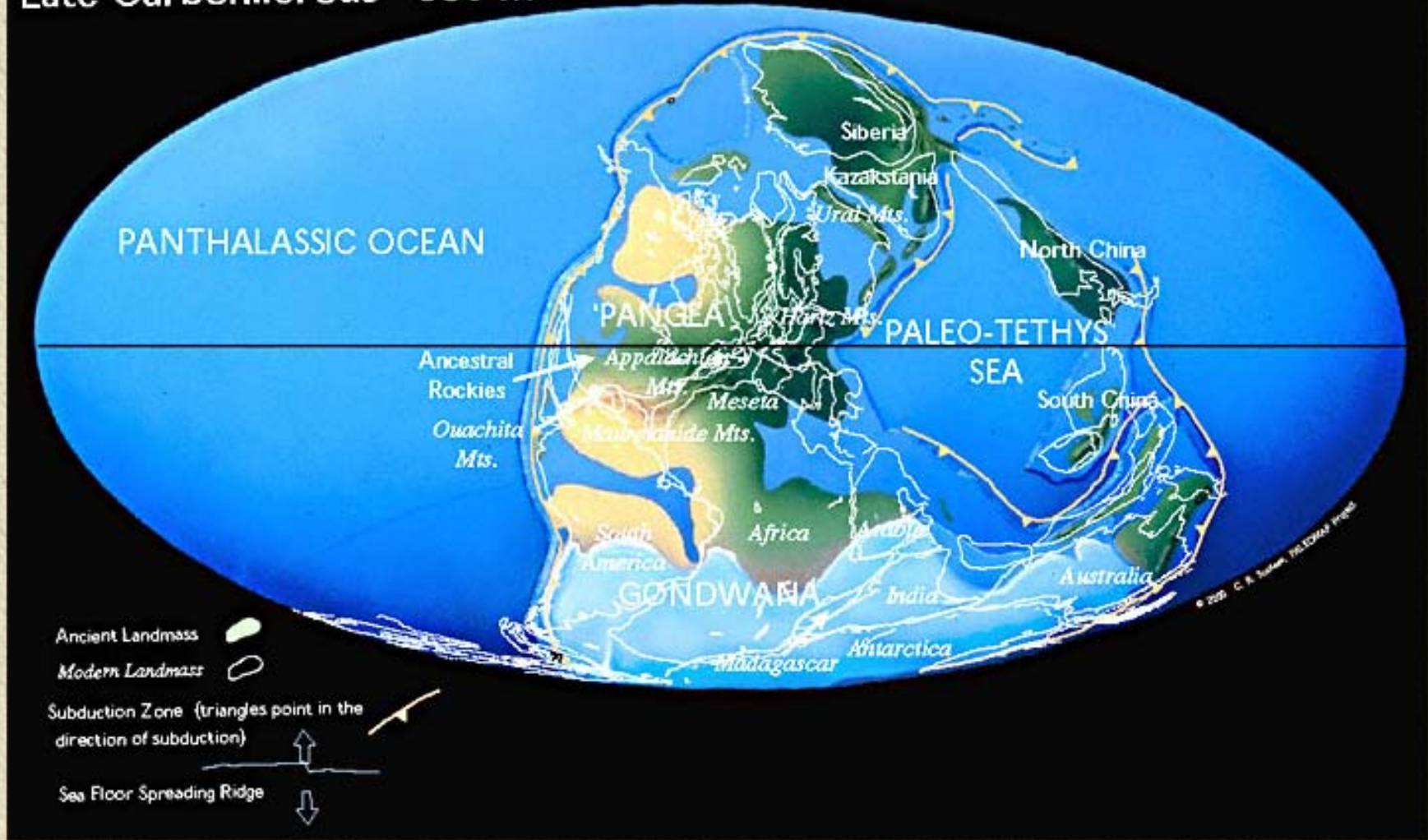
Early Carboniferous 356 Ma

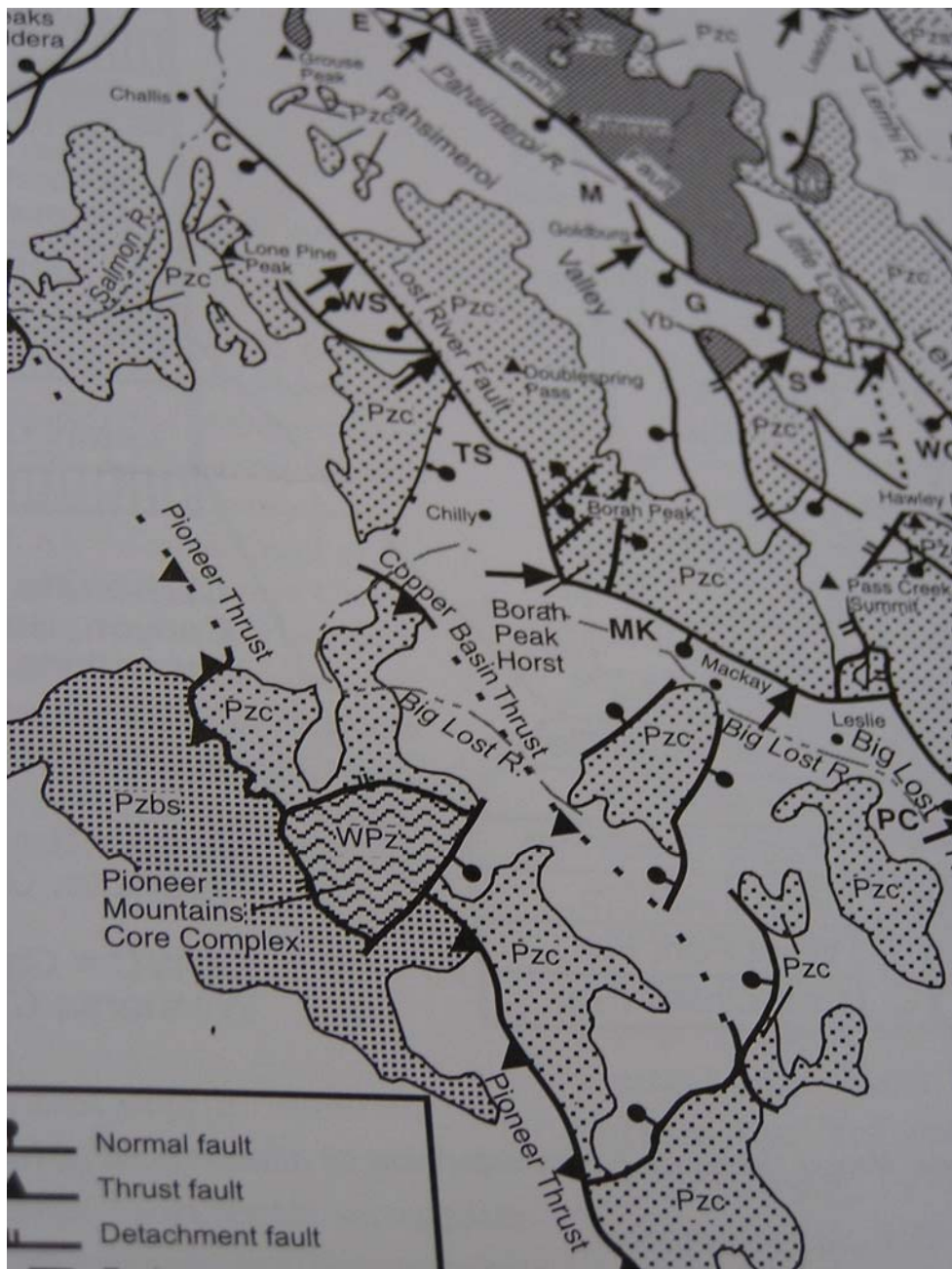


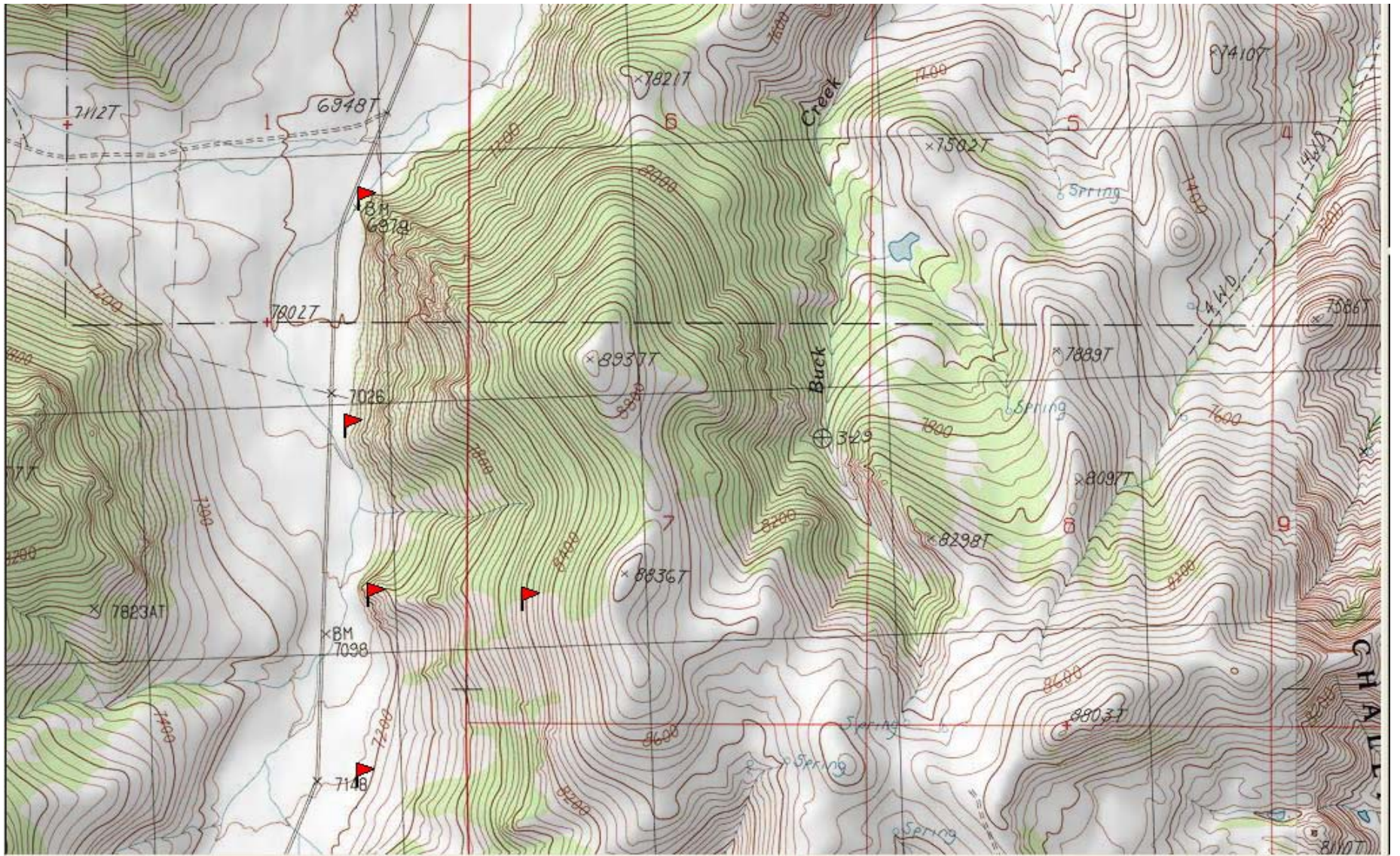
- Ancient Landmass 
- Modern Landmass 
- Subduction Zone (triangles point in the direction of subduction) 
- Sea Floor Spreading Ridge 

© 2002 C. R. Scotese, PALEOMAP Project

Late Carboniferous 306 Ma







Spring Hill









