

Willow Creek Prospect



Scott



Tim

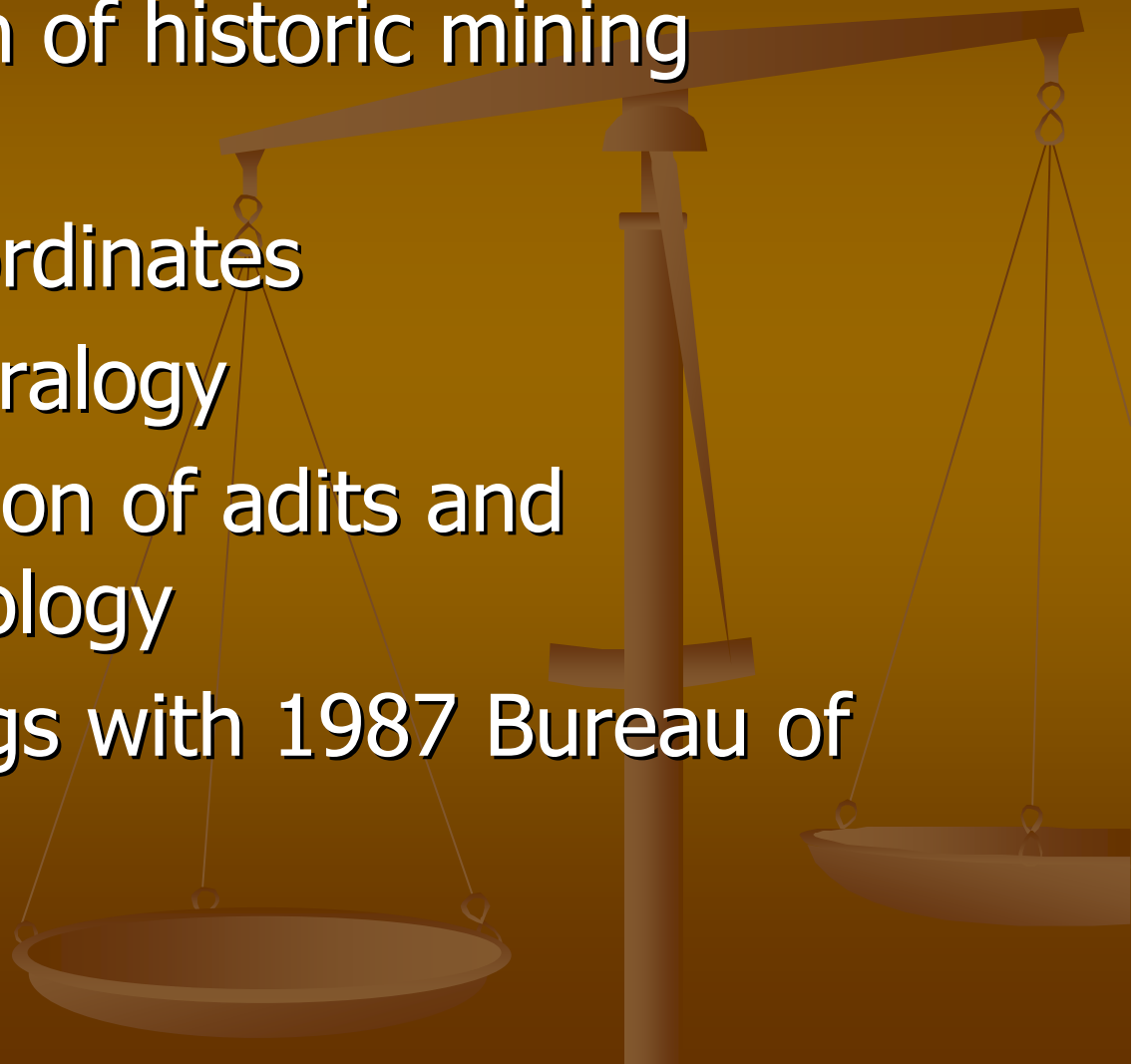


Steve

13 9:23 AM

Objectives

- Confirm location of historic mining prospect
- Record GPS coordinates
- Document mineralogy
- Record orientation of adits and surrounding geology
- Compare findings with 1987 Bureau of Mines report





studied mines

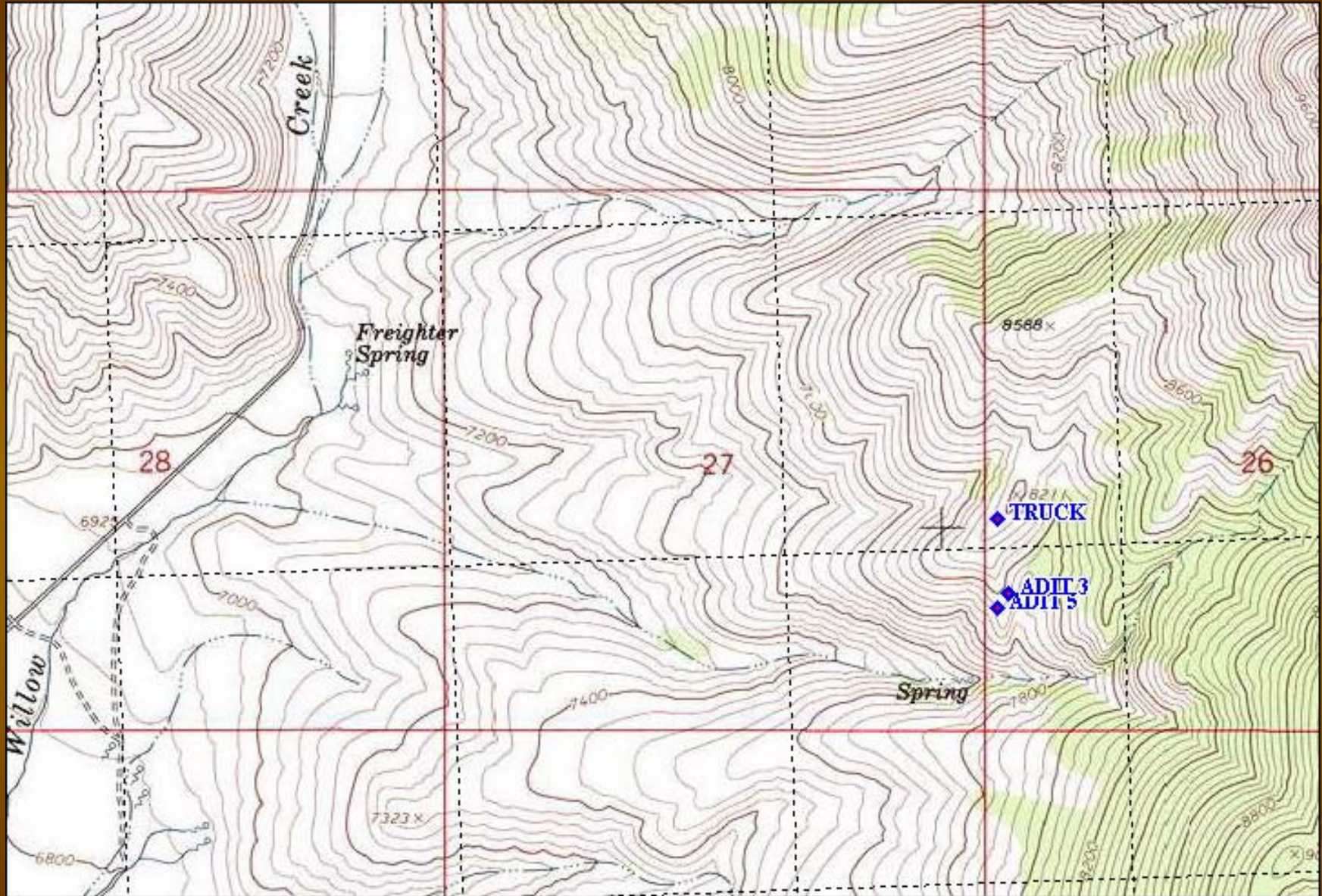
Freighter Spring

Birch Springs

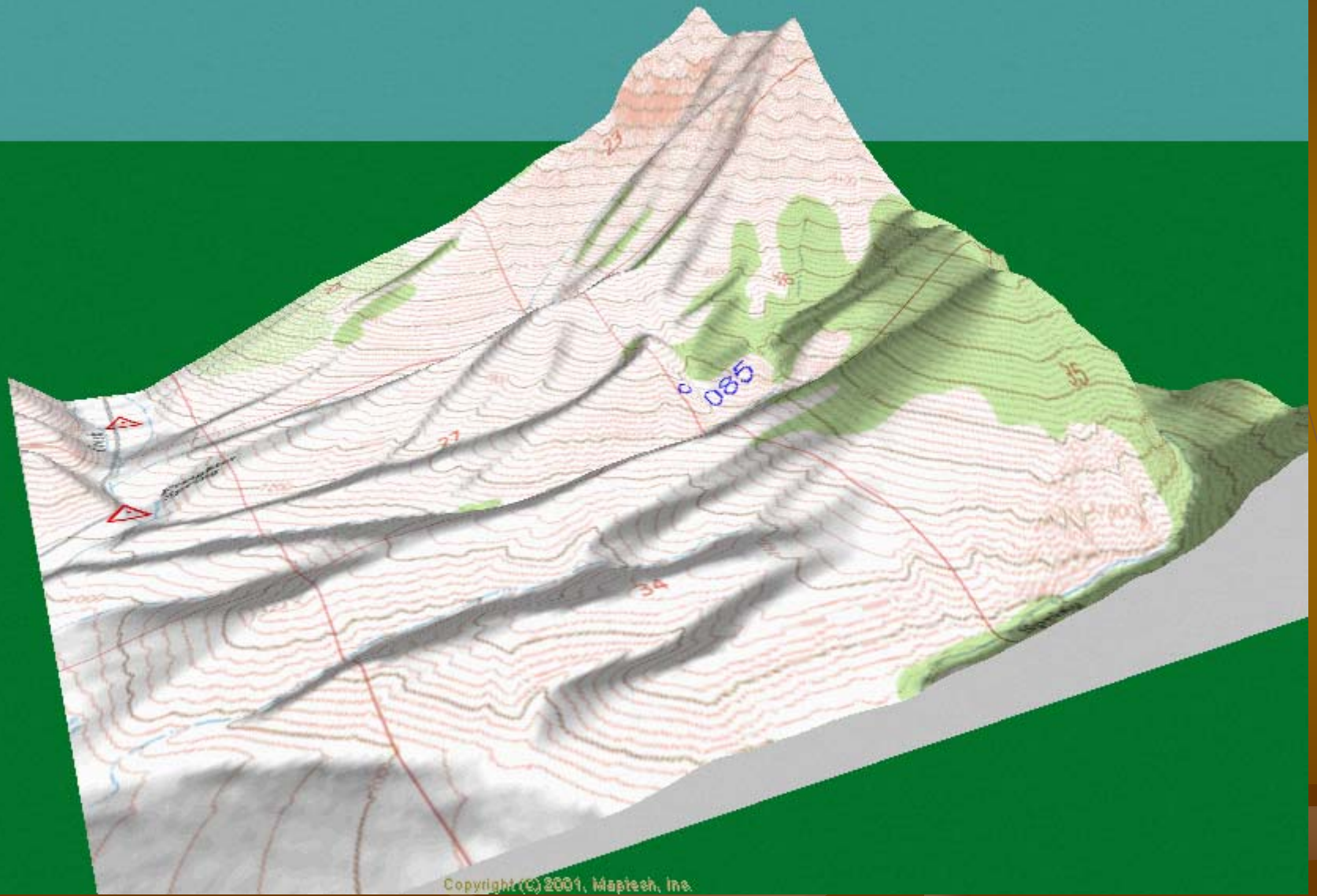
ing

Image © 2005 EarthSat
Image © 2005 DigitalGlobe

© 2005 Google



Map created with TOPO!® ©2003 National Geographic (www.nationalgeographic.com/topo)



Copyright (C) 2001, Maptech, Inc.

Mineralogy

Barite



Mineralogy

Galena



Mineralogy

Sulfide Ore (Sphalerite?)



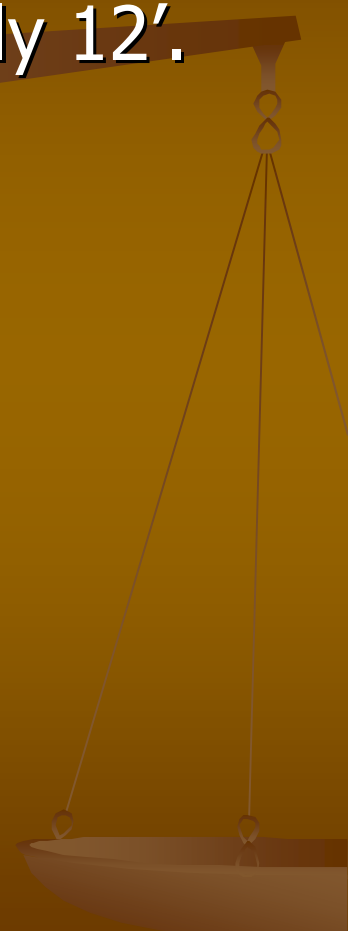
Geologic Orientation

- Dolomite Country Rock bedding strikes due north, dips at $40-50^\circ$ due west



Geologic Orientation

- Bearing of Adit was 152° , depth approximately 12'.







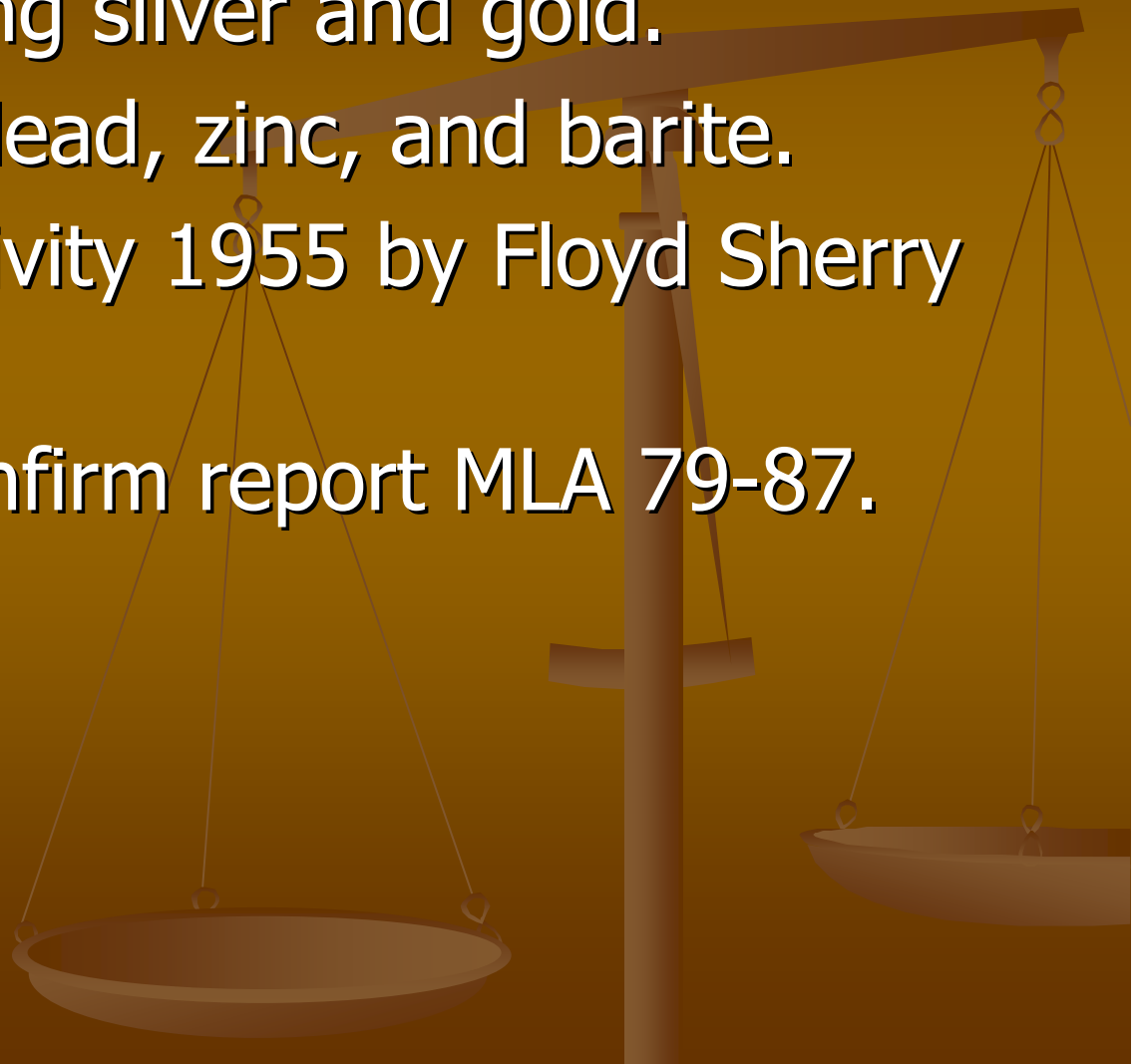
Fault Orientation

- Fault comprised the south wall of adit
- Strike 152°, Dip 78 NE
- Slickensides clearly visible



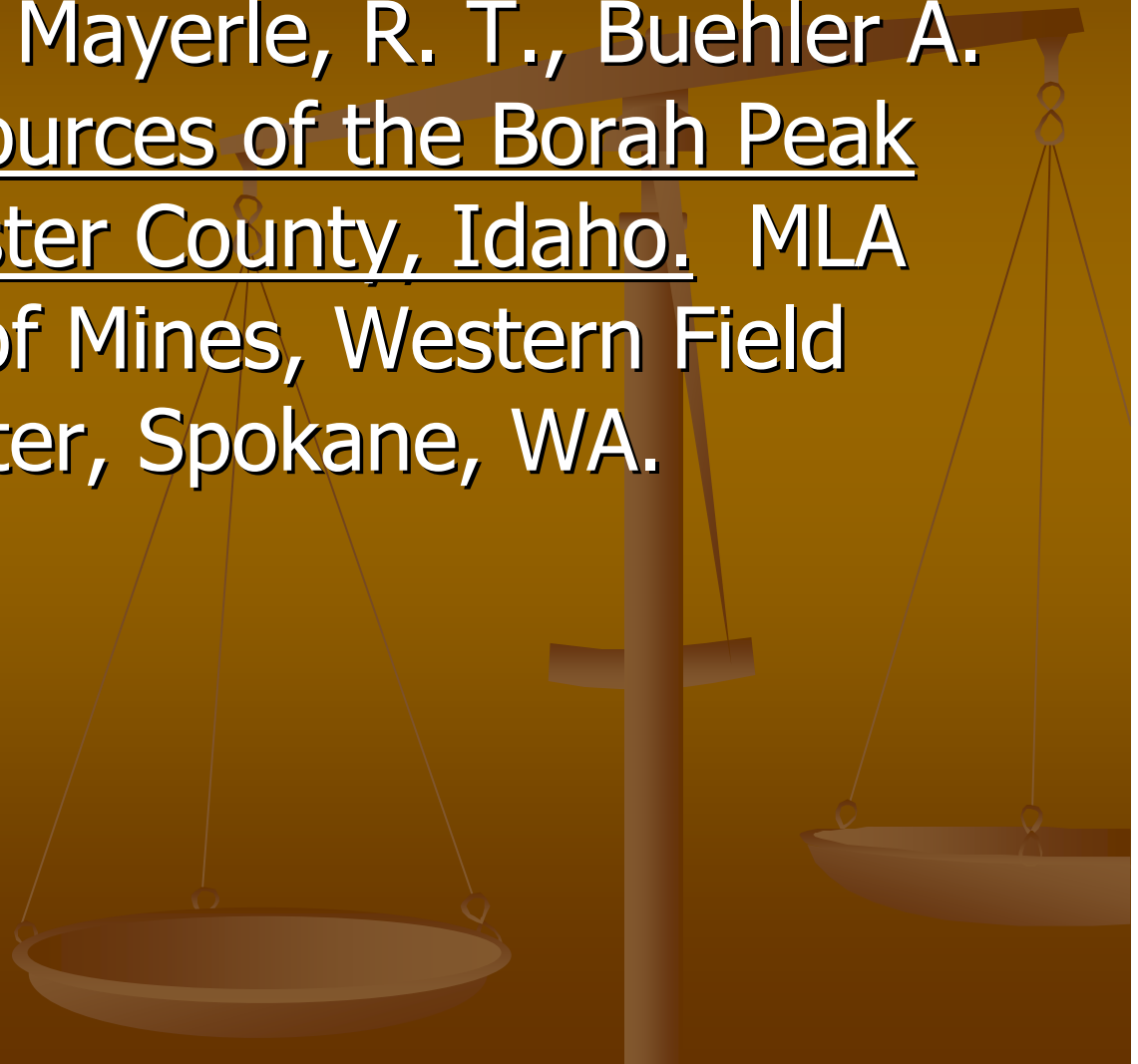
History

- Earliest claims date from 1882.
- Originally seeking silver and gold.
- Other minerals lead, zinc, and barite.
- Most recent activity 1955 by Floyd Sherry of Mackay.
- Our findings confirm report MLA 79-87.



Bibliography

- Capstick, D. O., Mayerle, R. T., Buehler A. R., Mineral Resources of the Borah Peak Study Area, Custer County, Idaho. MLA 79-87, Bureau of Mines, Western Field Operations Center, Spokane, WA.



THANKS

To Mike Weaver for All His Help

