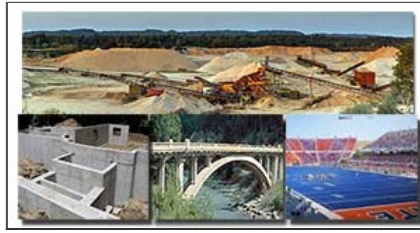


Database of Select Aggregate Material Sources for Idaho

Map



Tags

construction, material source, Idaho, sand, concrete, asphalt, gravel, geology, aggregate

Summary

Database of Select Aggregate Material Sources in Idaho: locations and attribute data about each material source. This inventory is in development to assist locating sufficient quantity and quality of aggregate resources for use in Idaho. A secondary intent is to feature subsurface geology for research purposes.

Description

Database of Select Aggregate Material Sources in Idaho (version 1.2015.1), Idaho Geological Survey (IGS) publication DD-9. A relational Personal Geodatabase created using ArcGIS 10.2.2 and Microsoft Access 2013 of aggregate material source locations and attributes for Idaho. Some locations are outside of Idaho, but identified as material sources for Idaho. The Primary table in the database contains WGS84 latitude and longitude location data, and this was used to create two featureclasses in the database, and a stand alone shapefile. These three feature classes differ only by projection, or in the case of the shapefile by extension as well, so this metadata will apply to them all generally. Projection information may differ, however. This metadata export created from .mxd file. The development of this database relies largely on voluntary submission of verifiable data from state and other agencies. This is a valuable research tool for locating appropriate aggregate material supplies for construction and maintenance of critical infrastructure, commercial development, housing, schools, etc., as well as some services and commodities. Where possible, it includes material test results and geologic information. This publication is a work in progress and is incomplete. Every effort has been made to verify location accuracy; however, any additions or corrections should be directed to the Idaho Geological Survey. See README.txt included with download bundle to locate all metadata sources.

Credits

Christopher A. Tate, Virginia S. Gillerman, Loudon R. Stanford.

Use limitations

Locations are for overall quarry site, i.e., one location point per quarry.

Extent

There is no extent for this item.

Scale Range

Maximum (zoomed in) 1:5,000

Minimum (zoomed out) 1:150,000,000

ArcGIS Metadata ▶

Topics and Keywords ▶

THEMES OR CATEGORIES OF THE RESOURCE economy, location, planning Cadastre, structure, transportation, utilities Communication

CONTENT TYPE Downloadable Data

EXPORT TO FGDC CSDGM XML FORMAT AS RESOURCE DESCRIPTION No

[Hide Topics and Keywords ▲](#)

Citation ▶

TITLE Database of Select Aggregate Material Sources for Idaho

REVISION DATE 2015-11-17 00:00:00

PRESENTATION FORMATS * digital map

[Hide Citation ▲](#)

Resource Details ▶

DATASET LANGUAGES English (UNITED STATES)

DATASET CHARACTER SET utf8 - 8 bit UCS Transfer Format

* PROCESSING ENVIRONMENT Microsoft Windows 7 Version 6.1 (Build 7601) Service Pack 1; Esri ArcGIS 10.2.2.3552

CREDITS

Christopher A. Tate, Virginia S. Gillerman, Loudon R. Stanford.

ARCGIS ITEM PROPERTIES

* NAME AggDB.mxd

[Hide Resource Details ▲](#)

Extents ▶

EXTENT

DESCRIPTION

State of Idaho and adjacent areas.

[Hide Extents ▲](#)

Resource Points of Contact ▶

POINT OF CONTACT

INDIVIDUAL'S NAME Christopher Tate

ORGANIZATION'S NAME Idaho Geological Survey

CONTACT'S POSITION Faculty

CONTACT'S ROLE custodian

[Hide Resource Points of Contact ▲](#)

Resource Maintenance ►

RESOURCE MAINTENANCE
UPDATE FREQUENCY as needed

Hide Resource Maintenance ▲

Resource Constraints ►

CONSTRAINTS
LIMITATIONS OF USE
Locations are for overall quarry site, i.e., one location point per quarry.

Hide Resource Constraints ▲

Distribution ►

DISTRIBUTION FORMAT
* NAME Map

Hide Distribution ▲

Metadata Details ►

METADATA LANGUAGE English (UNITED STATES)
METADATA CHARACTER SET utf8 - 8 bit UCS Transfer Format

METADATA IDENTIFIER BA877456-FD92-4649-BD85-1493C08AB4FE

SCOPE OF THE DATA DESCRIBED BY THE METADATA dataset
SCOPE NAME * dataset

LAST UPDATE 2015-11-17

ARCGIS METADATA PROPERTIES
METADATA FORMAT ArcGIS 1.0
METADATA STYLE North American Profile of ISO19115 2003
STANDARD OR PROFILE USED TO EDIT METADATA NAP

CREATED IN ARCGIS FOR THE ITEM 2015-11-17 08:58:31
LAST MODIFIED IN ARCGIS FOR THE ITEM 2015-11-17 09:24:05

AUTOMATIC UPDATES
HAVE BEEN PERFORMED Yes
LAST UPDATE 2015-11-17 09:24:05
INTERNAL DESCRIPTION AND METADATA ARE SYNCHRONIZED Yes

Hide Metadata Details ▲

Metadata Contacts ►

METADATA CONTACT
ORGANIZATION'S NAME Idaho Geological Survey
CONTACT'S ROLE owner

CONTACT INFORMATION ►

PHONE

VOICE (208) 885-7991

ADDRESS

TYPE postal

DELIVERY POINT 875 Perimeter Drive MS 3014

CITY Moscow

ADMINISTRATIVE AREA Idaho

POSTAL CODE 83844

COUNTRY US

E-MAIL ADDRESS igs@uidaho.edu

HOURS OF SERVICE

8:00 am - 5:00 pm PTZ

CONTACT INSTRUCTIONS

Room 303 Morrill Hall

University of Idaho Moscow campus

http://www.idahogeology.org/uploads/VisitorParking/VisitorParking_IdahoGeologicalSurvey_v2-2015-1.pdf

Hide Contact information ▲

Hide Metadata Contacts ▲

Thumbnail and Enclosures ►

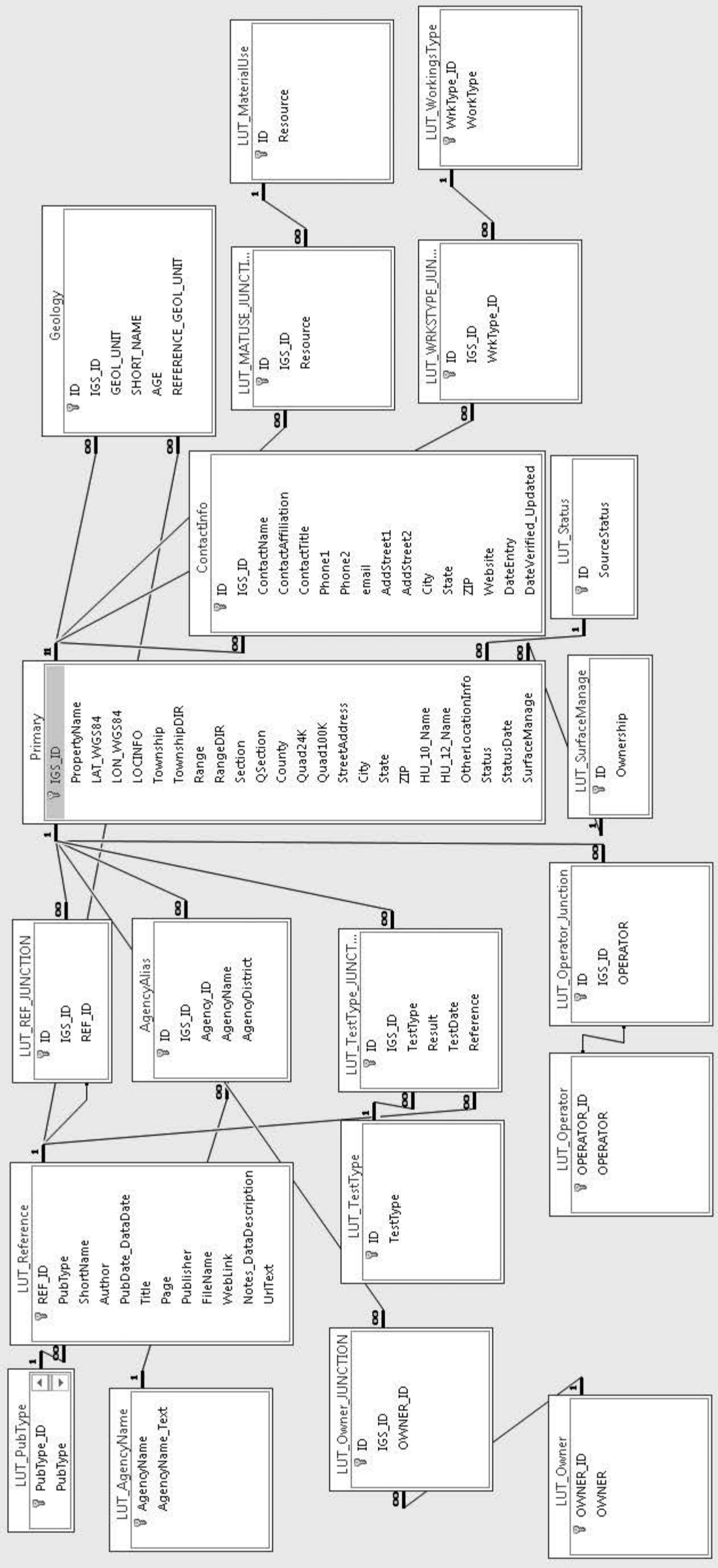
THUMBNAIL

THUMBNAIL TYPE JPG

Hide Thumbnail and Enclosures ▲



Relationships



ID	TableName	FieldName	FieldType	FieldLength	Table/FieldDescription	PickList
0	ArcGIS_PersonalGeodatabase_TABLES				Tables created by ArcGIS during registration of Personal Geodatabase are listed but not described in detail.	
1	GDB_GeomColumns	IdxOriginX	Double	8	Created by ArcGIS as part of ESRI's Personal Geodatabase data structure	
2	GDB_GeomColumns	IdxOriginY	Double	8	Created by ArcGIS as part of ESRI's Personal Geodatabase data structure	
3	GDB_GeomColumns	IdxGridSize	Double	8	Created by ArcGIS as part of ESRI's Personal Geodatabase data structure	
4	GDB_GeomColumns	SRID	Long	4	Created by ArcGIS as part of ESRI's Personal Geodatabase data structure	
5	GDB_GeomColumns	HasZ	Boolean	1	Created by ArcGIS as part of ESRI's Personal Geodatabase data structure	
6	GDB_GeomColumns	HasM	Boolean	1	Created by ArcGIS as part of ESRI's Personal Geodatabase data structure	
7	GDB_GeomColumns	ZLow	Double	8	Created by ArcGIS as part of ESRI's Personal Geodatabase data structure	
8	GDB_GeomColumns	ZHigh	Double	8	Created by ArcGIS as part of ESRI's Personal Geodatabase data structure	
9	GDB_GeomColumns	MLow	Double	8	Created by ArcGIS as part of ESRI's Personal Geodatabase data structure	
10	GDB_GeomColumns	MHigh	Double	8	Created by ArcGIS as part of ESRI's Personal Geodatabase data structure	
11	GDB_ItemRelationships	ObjectID	Long	4	Created by ArcGIS as part of ESRI's Personal Geodatabase data structure	
12	GDB_ItemRelationships	UUID	GUID	16	Created by ArcGIS as part of ESRI's Personal Geodatabase data structure	
13	GDB_ItemRelationships	OriginID	GUID	16	Created by ArcGIS as part of ESRI's Personal Geodatabase data structure	
14	GDB_ItemRelationships	DestID	GUID	16	Created by ArcGIS as part of ESRI's Personal Geodatabase data structure	
15	GDB_ItemRelationships	Type	GUID	16	Created by ArcGIS as part of ESRI's Personal Geodatabase data structure	
16	GDB_ItemRelationships	Attributes	Memo	0	Created by ArcGIS as part of ESRI's Personal Geodatabase data structure	
17	GDB_ItemRelationships	Properties	Long	4	Created by ArcGIS as part of ESRI's Personal Geodatabase data structure	
18	GDB_ItemRelationshipTypes	ObjectID	Long	4	Created by ArcGIS as part of ESRI's Personal Geodatabase data structure	
19	GDB_ItemRelationshipTypes	UUID	GUID	16	Created by ArcGIS as part of ESRI's Personal Geodatabase data structure	
20	GDB_ItemRelationshipTypes	OrigItemTypeID	GUID	16	Created by ArcGIS as part of ESRI's Personal Geodatabase data structure	
21	GDB_ItemRelationshipTypes	DestItemTypeID	GUID	16	Created by ArcGIS as part of ESRI's Personal Geodatabase data structure	
22	GDB_ItemRelationshipTypes	Name	Text	160	Created by ArcGIS as part of ESRI's Personal Geodatabase data structure	
23	GDB_ItemRelationshipTypes	ForwardLabel	Text	255	Created by ArcGIS as part of ESRI's Personal Geodatabase data structure	
24	GDB_ItemRelationshipTypes	BackwardLabel	Text	255	Created by ArcGIS as part of ESRI's Personal Geodatabase data structure	
25	GDB_ItemRelationshipTypes	IsContainment	Integer	2	Created by ArcGIS as part of ESRI's Personal Geodatabase data structure	
26	GDB_Items	ObjectID	Long	4	Created by ArcGIS as part of ESRI's Personal Geodatabase data structure	
27	GDB_Items	UUID	GUID	16	Created by ArcGIS as part of ESRI's Personal Geodatabase data structure	
28	GDB_Items	Type	GUID	16	Created by ArcGIS as part of ESRI's Personal Geodatabase data structure	
29	GDB_Items	Name	Text	160	Created by ArcGIS as part of ESRI's Personal Geodatabase data structure	
30	GDB_Items	PhysicalName	Text	160	Created by ArcGIS as part of ESRI's Personal Geodatabase data structure	
31	GDB_Items	Path	Memo	0	Created by ArcGIS as part of ESRI's Personal Geodatabase data structure	
32	GDB_Items	DatasetSubtype 1	Long	4	Created by ArcGIS as part of ESRI's Personal Geodatabase data structure	
33	GDB_Items	DatasetSubtype 2	Long	4	Created by ArcGIS as part of ESRI's Personal Geodatabase data structure	
34	GDB_Items	DatasetInfo1	Text	255	Created by ArcGIS as part of ESRI's Personal Geodatabase data structure	
35	GDB_Items	DatasetInfo2	Text	255	Created by ArcGIS as part of ESRI's Personal Geodatabase data structure	
36	GDB_Items	URL	Text	255	Created by ArcGIS as part of ESRI's Personal Geodatabase data structure	
37	GDB_Items	Definition	Memo	0	Created by ArcGIS as part of ESRI's Personal Geodatabase data structure	
38	GDB_Items	Documentation	Memo	0	Created by ArcGIS as part of ESRI's Personal Geodatabase data structure	
39	GDB_Items	ItemInfo	Memo	0	Created by ArcGIS as part of ESRI's Personal Geodatabase data structure	
40	GDB_Items	Properties	Long	4	Created by ArcGIS as part of ESRI's Personal Geodatabase data structure	
41	GDB_Items	Defaults	Long Binary (OLE Object)	0	Created by ArcGIS as part of ESRI's Personal Geodatabase data structure	
42	GDB_Items	Shape	Long Binary (OLE Object)	0	Created by ArcGIS as part of ESRI's Personal Geodatabase data structure	
43	GDB_Items_Shape_Index	IndexedObjectID	Long	4	Created by ArcGIS as part of ESRI's Personal Geodatabase data structure	
44	GDB_Items_Shape_Index	MinGX	Long	4	Created by ArcGIS as part of ESRI's Personal Geodatabase data structure	
45	GDB_Items_Shape_Index	MinGY	Long	4	Created by ArcGIS as part of ESRI's Personal Geodatabase data structure	

46	GDB_Items_Shape_Index	MaxGX	Long	4	Created by ArcGIS as part of ESRI's Personal Geodatabase data structure
47	GDB_Items_Shape_Index	MaxGY	Long	4	Created by ArcGIS as part of ESRI's Personal Geodatabase data structure
48	GDB_ItemTypes	ObjectID	Long	4	Created by ArcGIS as part of ESRI's Personal Geodatabase data structure
49	GDB_ItemTypes	UUID	GUID	16	Created by ArcGIS as part of ESRI's Personal Geodatabase data structure
50	GDB_ItemTypes	ParentTypeID	GUID	16	Created by ArcGIS as part of ESRI's Personal Geodatabase data structure
51	GDB_ItemTypes	Name	Text	160	Created by ArcGIS as part of ESRI's Personal Geodatabase data structure
52	GDB_ReplicaLog	ID	Long	4	Created by ArcGIS as part of ESRI's Personal Geodatabase data structure
53	GDB_ReplicaLog	ReplicaID	Long	4	Created by ArcGIS as part of ESRI's Personal Geodatabase data structure
54	GDB_ReplicaLog	Event	Long	4	Created by ArcGIS as part of ESRI's Personal Geodatabase data structure
55	GDB_ReplicaLog	ErrorCode	Long	4	Created by ArcGIS as part of ESRI's Personal Geodatabase data structure
56	GDB_ReplicaLog	LogDate	Date/Time	8	Created by ArcGIS as part of ESRI's Personal Geodatabase data structure
57	GDB_ReplicaLog	SourceBeginGen	Long	4	Created by ArcGIS as part of ESRI's Personal Geodatabase data structure
58	GDB_ReplicaLog	SourceEndGen	Long	4	Created by ArcGIS as part of ESRI's Personal Geodatabase data structure
59	GDB_ReplicaLog	TargetGen	Long	4	Created by ArcGIS as part of ESRI's Personal Geodatabase data structure
60	GDB_SpatialRefs	SRID	Long	4	Created by ArcGIS as part of ESRI's Personal Geodatabase data structure
61	GDB_SpatialRefs	SRTEXT	Memo	0	Created by ArcGIS as part of ESRI's Personal Geodatabase data structure
62	GDB_SpatialRefs	FalseX	Double	8	Created by ArcGIS as part of ESRI's Personal Geodatabase data structure
63	GDB_SpatialRefs	FalseY	Double	8	Created by ArcGIS as part of ESRI's Personal Geodatabase data structure
64	GDB_SpatialRefs	XYUnits	Double	8	Created by ArcGIS as part of ESRI's Personal Geodatabase data structure
65	GDB_SpatialRefs	FalseZ	Double	8	Created by ArcGIS as part of ESRI's Personal Geodatabase data structure
66	GDB_SpatialRefs	ZUnits	Double	8	Created by ArcGIS as part of ESRI's Personal Geodatabase data structure
67	GDB_SpatialRefs	FalseM	Double	8	Created by ArcGIS as part of ESRI's Personal Geodatabase data structure
68	GDB_SpatialRefs	MUnits	Double	8	Created by ArcGIS as part of ESRI's Personal Geodatabase data structure
69	GDB_SpatialRefs	IsHighPrecision	Long	4	Created by ArcGIS as part of ESRI's Personal Geodatabase data structure
70	GDB_SpatialRefs	XYTolerance	Double	8	Created by ArcGIS as part of ESRI's Personal Geodatabase data structure
71	GDB_SpatialRefs	ZTolerance	Double	8	Created by ArcGIS as part of ESRI's Personal Geodatabase data structure
72	GDB_SpatialRefs	MTolerance	Double	8	Created by ArcGIS as part of ESRI's Personal Geodatabase data structure
73	GDB_ColumnInfo	FieldName	Text	255	Created by ArcGIS as part of ESRI's Personal Geodatabase data structure
74	GDB_ColumnInfo	columnFlags	Long	4	Created by ArcGIS as part of ESRI's Personal Geodatabase data structure
75	GDB_ColumnInfo	TableName	Text	255	Created by ArcGIS as part of ESRI's Personal Geodatabase data structure
76	GDB_DatabaseLocks	LockID	Long	4	Created by ArcGIS as part of ESRI's Personal Geodatabase data structure
77	GDB_DatabaseLocks	MachineName	Memo	0	Created by ArcGIS as part of ESRI's Personal Geodatabase data structure
78	GDB_DatabaseLocks	LockType	Long	4	Created by ArcGIS as part of ESRI's Personal Geodatabase data structure
79	GDB_DatabaseLocks	UserName	Memo	0	Created by ArcGIS as part of ESRI's Personal Geodatabase data structure
80	GDB_GeomColumns	ExtentLeft	Double	8	Created by ArcGIS as part of ESRI's Personal Geodatabase data structure
81	GDB_GeomColumns	ExtentBottom	Double	8	Created by ArcGIS as part of ESRI's Personal Geodatabase data structure
82	GDB_GeomColumns	ExtentRight	Double	8	Created by ArcGIS as part of ESRI's Personal Geodatabase data structure
83	GDB_GeomColumns	ShapeType	Long	4	Created by ArcGIS as part of ESRI's Personal Geodatabase data structure
84	GDB_GeomColumns	ExtentTop	Double	8	Created by ArcGIS as part of ESRI's Personal Geodatabase data structure
85	GDB_GeomColumns	FieldName	Text	255	Created by ArcGIS as part of ESRI's Personal Geodatabase data structure
86	GDB_GeomColumns	TableName	Text	255	Created by ArcGIS as part of ESRI's Personal Geodatabase data structure
87	Selections	SelectionID	Long	4	Created by ArcGIS as part of ESRI's Personal Geodatabase data structure for feature class object.
88	Selections	TargetName	Text	255	Created by ArcGIS as part of ESRI's Personal Geodatabase data structure for feature class object.
90	SelectedObjects	SelectionID	Long		Created by ArcGIS as part of ESRI's Personal Geodatabase data structure for feature class object.
91	SelectedObjects	ObjectID	Long		Created by ArcGIS as part of ESRI's Personal Geodatabase data structure for feature class object.
100	Geology_TABLE				Table of geologic data.
105	Geology	ID	Long	4	Unique ID for this table.
110	Geology	AGE	Text	255	Age of deposit.
115	Geology	SHORT_NAME	Text	255	Short name of geologic unit.

120	Geology	IGS_ID	Text	255	IGS property ID.
125	Geology	GEOL_UNIT	Text	255	Geologic unit (as on map etc.).
130	Geology	REFERENCE_GEOLOG_UNIT	Text	255	Short name of source of data (from References table).
200	AgencyAlias_TABLE				This table catalogues property ID's generated by government agencies other than IGS.
205	AgencyAlias	ID	Long	4	Unique ID for this table
210	AgencyAlias	IGS_ID	Text	255	Unique property identifier
215	AgencyAlias	Agency_ID	Text	255	Property identifier according to issuing agency
220	AgencyAlias	AgencyName	Text	255	Agency that created Agency_ID
225	AgencyAlias	AgencyDistrict	Text	255	Agency district, if applicable
300	ChangeLog_TABLE				This table is for tracking changes to individual properties.
305	ChangeLog	ID	Long	4	Unique ID for table.
310	ChangeLog	EntryDate	Date/Time	8	Automatic date entry.
315	ChangeLog	IGS_ID	Text	255	IGS property number.
320	ChangeLog	Author	Text	255	Name or initials of author of entry.
325	ChangeLog	Notes	Text	255	Change log for alterations made to property data. Include table altered, record altered, description of change, rational for altering, and DATED VERSION of AggDB file altered. Use one entry per change.
400	ContactInfo_TABLE				This table contains contact information for owners &/or operators associated with properties.
405	ContactInfo	Phone1	Text	255	Office phone.
410	ContactInfo	DateEntry	Date/Time	8	Automatic date for new record.
415	ContactInfo	Website	Text	255	Website of company or agency.
420	ContactInfo	ZIP	Long	4	You guessed it, the ZIP code.
425	ContactInfo	State	Text	255	State of mailing address.
430	ContactInfo	City	Text	255	City of mailing address.
435	ContactInfo	AddStreet2	Text	255	Office or apartment number.
440	ContactInfo	AddStreet1	Text	255	Mailing address.
445	ContactInfo	DateVerified_Updated	Date/Time	8	Date of verification or update (mm/dd/yyyy).
450	ContactInfo	Phone2	Text	255	Cell phone or message phone.
455	ContactInfo	ContactAffiliation	Text	255	Name of Company or Agency person is affiliated with. Use Private for a private landowner.
460	ContactInfo	ContactTitle	Text	255	Position contact has at company or agency.
465	ContactInfo	ContactName	Text	255	Name of person.
470	ContactInfo	ID	Long	4	Unique ID for this table.
475	ContactInfo	email	Text	255	email of contact.
480	ContactInfo	IGS_ID	Text	255	IGS property number. Use separate entries for multiple contacts for a given property.
500	ITD_Primary_Points_TABLE				This table is a feature class attribute table created in ArcGIS from the Primary table.
505	ITD_Primary_Points	TownshipDIR	Text	1	Township direction.
510	ITD_Primary_Points	Section	Text	15	PLSS section.
515	ITD_Primary_Points	Township	Text	3	PLSS township.
520	ITD_Primary_Points	QSection	Text	4	PLSS quarter section.
525	ITD_Primary_Points	QQSection	Text	4	PLSS quarter quarter section.
530	ITD_Primary_Points	COUNTY	Text	16	County name.
535	ITD_Primary_Points	QUAD_NAME	Text	41	USGS 7.5 minute (1:24000) quad name.
540	ITD_Primary_Points	SurfaceManage	Text	8	Steward of property (see [LUT_SurfaceManage.ID]).
545	ITD_Primary_Points	Range	Text	3	PLSS range.
550	ITD_Primary_Points	StreetAddress	Text	255	Street address of property, if available (not mailing address).
555	ITD_Primary_Points	Shape	Long Binary (OLE Object)	0	Created by ArcGIS as part of ESRI's Personal Geodatabase data structure for feature class object.
560	ITD_Primary_Points	IGS_ID	Text	255	Unique IGS identifier for property.
565	ITD_Primary_Points	PropertyName	Text	255	Informal, local, historical, or other name(s) of property (not agency designations).
570	ITD_Primary_Points	LAT_WGS84	Double	8	WGS84 latitude.
572	ITD_Primary_Points	LON_WGS84	Double	8	WGS84 longitude.
574	ITD_Primary_Points	RangeDIR	Text	1	Range direction.
576	ITD_Primary_Points	HU_12_NAME	Text	80	Watershed HUC 12 name.
578	ITD_Primary_Points	OBJECTID	Long	4	Created by ArcGIS as part of ESRI's Personal Geodatabase data structure for feature class object.
580	ITD_Primary_Points	LOCINFO	Text	255	For locations verified using Google Earth
582	ITD_Primary_Points	City	Text	255	Street address of property, if available (not mailing address).
584	ITD_Primary_Points	OtherLocationInfo	Text	255	Other location information.
586	ITD_Primary_Points	Status	Long	4	Status of property (see [LUT_Status.ID]).
588	ITD_Primary_Points	StatusDate	Text	255	Date of status update.
590	ITD_Primary_Points	ZIP	Long	4	ZIP code of property location. For use in outside land use or TIGER data integration/research.
592	ITD_Primary_Points	STATE	Text	2	State.
594	ITD_Primary_Points	HU_10_NAME	Text	80	Watershed HUC 10 name.
600	ITD_Primary_Points_Shape_Index_TABLE				This table is a feature class location table created in ArcGIS from the Primary table.
605	ITD_Primary_Points_Shape_Index	MinGY	Long	4	Created by ArcGIS as part of ESRI's Personal Geodatabase data structure for feature class object.
610	ITD_Primary_Points_Shape_Index	MaxGY	Long	4	Created by ArcGIS as part of ESRI's Personal Geodatabase data structure for feature class object.
615	ITD_Primary_Points_Shape_Index	MaxGX	Long	4	Created by ArcGIS as part of ESRI's Personal Geodatabase data structure for feature class object.
620	ITD_Primary_Points_Shape_Index	MinGX	Long	4	Created by ArcGIS as part of ESRI's Personal Geodatabase data structure for feature class object.
625	ITD_Primary_Points_Shape_Index	IndexedObjectid	Long	4	Created by ArcGIS as part of ESRI's Personal Geodatabase data structure for feature class object.
700	LUT_MaterialUse_TABLE				This table lists known uses of material sources.
705	LUT_MaterialUse	ID	Long	4	Unique ID for entries in this table.

710	LUT_MaterialUse	Resource	Text	255	List of material use(s).	Aggregate Undifferentiated; Concrete Mix; Asphalt Plant Mix; Base; Sub-Base; Fill; Rip-Rap; Sand; NR; Unknown
750	LUT_MATUSE_JUNCTION_TABLE				This table associates Material Use with IGS properties.	
755	LUT_MATUSE_JUNCTION	ID	Long	4	Unique ID for this table.	
760	LUT_MATUSE_JUNCTION	IGS_ID	Text	255	IGS property ID.	
765	LUT_MATUSE_JUNCTION	Resource	Long	4	Material use for this property. If more than one use, use a separate record.	
800	LUT_Operator_TABLE				This table contains known names of property operators.	
805	LUT_Operator	OPERATOR_ID	Long	4	Unique ID for this table: one per operator.	
810	LUT_Operator	OPERATOR	Text	255	Name of operator.	
850	LUT_Operator_JUNCTION_TABLE				This table associates property operators with IGS properties.	
855	LUT_Operator_Junction	ID	Long	4	Unique ID for this table.	
860	LUT_Operator_Junction	IGS_ID	Text	255	IGS property ID.	
865	LUT_Operator_Junction	OPERATOR	Text	255	Numerical value for Operator (from [LUT_Operator.ID]).	
900	LUT_Owner				This table contains known names of property owners (not to be confused with surface management steward).	
905	LUT_Owner	OWNER_ID	Long	4	Unique ID for this table.	
910	LUT_Owner	OWNER	Text	255	Owner name.	
950	LUT_Owner_JUNCTION_TABLE				This table associates property owners with IGS properties.	
955	LUT_Owner_JUNCTION	ID	Long	4	Unique ID for this table.	
960	LUT_Owner_JUNCTION	IGS_ID	Text	255	IGS property number.	
965	LUT_Owner_JUNCTION	OWNER_ID	Long	4	Numerical designation of owner name (see [LUT_Owner.OWNER_ID]).	
1000	LUT_Reference_TABLE				This table contains references for location and attribute data sources.	
1005	LUT_Reference	REF_ID	Long	4	Unique ID for this table, and ID for a publication.	
1010	LUT_Reference	PubType	Long	4	Type of publication (see LUT_PubType.PubType_ID).	
1015	LUT_Reference	ShortName	Text	255	Short name of source (for convenience in queries).	
1020	LUT_Reference	Author	Text	255	Author(s) of publication.	
1025	LUT_Reference	PubDate_DataDate	Long	4	Year of publication.	
1030	LUT_Reference	Title	Text	255	Title of publication.	
1035	LUT_Reference	Page	Text	255	Page number(s) of sourced data.	
1040	LUT_Reference	Publisher	Text	255	Publisher of sourced data.	
1045	LUT_Reference	FileName	Memo	0	File name of downloadable pub (if available).	
1050	LUT_Reference	WebLink	Memo	0	Link for web-retrieved pub outside IGS.	
1055	LUT_Reference	Notes_DataDescription	Memo	0	Additional notes about reference location, availability, etc.	
1060	LUT_PubType_TABLE				This table associates publication type with reference.	
1065	LUT_PubType	PubType_ID	Long	4	Unique ID for this table.	
1070	LUT_PubType	PubType	Text	255	Type of Document.	IGS Map; IGS Report; USGS Map; USGS Pub.; ITD Files; Other
1075	LUT_REF_JUNCTION_TABLE				This table associates references with IGS properties.	
1080	LUT_REF_JUNCTION	ID	Long	4	Unique ID for this table.	
1085	LUT_REF_JUNCTION	IGS_ID	Text	255	IGS property ID.	
1090	LUT_REF_JUNCTION	REF_ID	Long	4	Numerical ID for reference associated with this property (see [LUT_Reference.REF_ID]).	
1100	LUT_Status_TABLE				This is a look up table for Status in the Primary table.	
1105	LUT_Status	ID	Long	4	Unique ID for this table.	
1110	LUT_Status	SourceStatus	Text	255	List of property status choices.	Active; Inactive; Depleted; NR
1150	LUT_SurfaceManage_TABLE				This is a look up table for SurfaceManage(ment) in the Primary table.	
1155	LUT_SurfaceManage	ID	Long	4	Primary key for this table.	
1160	LUT_SurfaceManage	Ownership	Text	255	Land steward according to BLM and/or other sources.	NR; Private Industry; ITD; IDL; Other State; BLM; BIA; County; City; Private Other; Other; Unknown; Private; Private (SRBPNA); BLM (SRBPNA); USFS; Military; USFW; State; DOE; BOR
1200	LUT_TestType_TABLE				This is a table of material test types.	
1205	LUT_TestType	ID	Long	4	Unique ID for this table.	
1210	LUT_TestType	TestType	Text	255	Type of test.	LA Abrasion/Wear (AASHTO T 96 or equivalent); Idaho Degradation (Idaho T-15); Specific Gravity; Ethylene Glycol (Idaho T-116); Na2O4S (AASHTO T 104); ASR (AASHTO T 303; ASTM C 1260); ASR (ASTM C 1293); ASR (AASHTO TP 111); ASR (ASTM C 295)
1250	LUT_TestType_JUNCTION				This table relates test type with result specifics with IGS properties.	
1255	LUT_TestType_JUNCTION	ID	Long	4	Unique ID for this table.	
1260	LUT_TestType_JUNCTION	IGS_ID	Text	255	IGS property number.	
1265	LUT_TestType_JUNCTION	TestType	Long	4	Type of test (see [LUT_TestType.ID]).	
1270	LUT_TestType_JUNCTION	Result	Text	255	Results.	
1275	LUT_TestType_JUNCTION	TestDate	Text	255	Date of test (mm/dd/yyyy).	
1280	LUT_TestType_JUNCTION	Reference	Long	4	ShortName origin of result data (for convenience only. Reference data resides in Reference table).	
1300	LUT_WorkingsType_TABLE				This table contains information about the type of workings used to harvest material from the source location.	
1305	LUT_WorkingsType	WrkType_ID	Long	4	Unique ID for this table.	
1310	LUT_WorkingsType	WorkType	Text	255	Types of workings.	NR; Bedrock Quarry; Sand and/or Gravel Quarry; Quarry Type Unknown
1350	LUT_WRKSTYPE_JUNCTION				This table relates workings type with IGS properties.	
1355	LUT_WRKSTYPE_JUNCTION	ID	Long	4	Unique ID for this table.	
1360	LUT_WRKSTYPE_JUNCTION	IGS_ID	Text	255	IGS ID for this property.	
1360	LUT_WRKSTYPE_JUNCTION	WrkType_ID	Long	4	Workings type for this property (see [LUT_WorkingsType.WrkType_ID]).	
1400	Primary_TABLE				This table contains unique names for properties in this database; includes location and other data.	
1405	Primary	IGS_ID	Text	255	Unique IGS identifier for property.	

1410	Primary	PropertyName	Text	255	Informal, local, historical, or other name(s) of property (not agency designations).
1415	Primary	LAT_WGS84	Double	8	WGS84 latitude.
1420	Primary	LON_WGS84	Double	8	WGS84 longitude.
1425	Primary	LOCINFO	Text	255	For locations verified using Google Earth or other methods.
1430	Primary	Township	Long	4	PLSS township.
1435	Primary	TownshipDIR	Text	255	Township direction.
1440	Primary	Range	Long	4	PLSS range.
1445	Primary	RangeDIR	Text	255	Range direction.
1450	Primary	Section	Long	4	PLSS section.
1455	Primary	QSection	Text	255	PLSS quarter section.
1460	Primary	County	Text	255	County that the property is located in.
1465	Primary	Quad	Text	255	USGS 7.5 minute (1:24000) quad name.
1470	Primary	StreetAddress	Text	255	Street address of property, if available (not mailing address).
1475	Primary	City	Text	255	Street address of property, if available (not mailing address).
1480	Primary	State	Text	255	Street address of property, if available (not mailing address).
1482	Primary	ZIP	Long	4	ZIP code of property location. For use in outside land use or TIGER data integration/research.
1484	Primary	HU_10_Name	Text	255	Watershed HUC 10 name.
1486	Primary	HU_12_Name	Text	255	Watershed HUC 12 name.
1488	Primary	OtherLocationInfo	Text	255	Other location information.
1490	Primary	Status	Long	4	Status of property (see [LUT_Status.ID]).
1492	Primary	StatusDate	Text	255	Date of status update.
1494	Primary	SurfaceManage	Long	4	Steward of property (see [LUT_SurfaceManage.ID]).
1500	ProceduralNotes_TABLE				This table contains documentation as part of the metadata structure.
1505	ProceduralNotes	ID	Long	4	Unique ID for this table.
1510	ProceduralNotes	Note	Memo	0	Procedural note.
1520	ProceduralNotes	Initials	Text	255	Author's name or initials
1525	ProceduralNotes	DateOfEntry	Date/Time	8	Automatic date of entry.
1530	ProceduralNotes	TimeOfEntry	Date/Time	8	Automatic time of entry.
1535	SelectedObjects	SelectionID	Long	4	Created by ArcGIS as part of ESRI's Personal Geodatabase data structure for feature class object.
1540	SelectedObjects	ObjectID	Long	4	Created by ArcGIS as part of ESRI's Personal Geodatabase data structure for feature class object.
1600	DataDictionary_TABLE				This table is a documentation of tables and fields in this database as part of the metadata structure.
1605	DataDictionary	ID	Long	4	Unique ID for this table.
1610	DataDictionary	TableName	Text	255	Name of Table.
1615	DataDictionary	FieldName	Text	255	Name of Field in Table.
1620	DataDictionary	FieldType	Text	255	Type of data the Field is formatted for.
1625	DataDictionary	FieldLength	Text	255	Length of field.
1630	DataDictionary	Table/FieldDescription	Text	255	Description of table/field.
1635	DataDictionary	PickList	Memo	0	Contents of pick list (if appropriate)