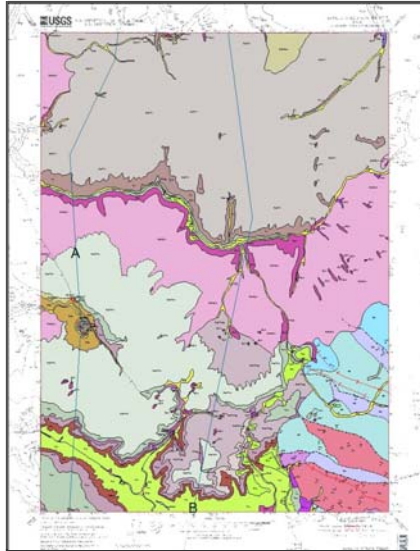


# Geologic Map of the Hawley Gulch Quadrangle, Bonneville and Madison Counties, Idaho, William M. Phillips, Renee L. Love, Dennis M. Feeney, 2019, Idaho Geological Survey Digital Web Map 186 (DWM-186)



## Tags

Idaho., Madison County, Geoscientific Information, GIS, Geologic Map, Bonneville County, Hawley Gulch Quadrangle

## Summary

Digital geologic map data (GIS database) of the Geologic Map of Hawley Gulch Quadrangle, Idaho, Idaho Geological Survey Digital Web Map 186, intended for non-site-specific investigations. The Geodatabase data set: HawleyGulch\_DWM-186-IGS.mdb.

## Description

These data were created from original field work or compiled from existing geologic map data at a scale of 1:24,000. This Personal Geodatabase is approximately compliant with the draft standard for publication of digital geologic maps (NCGMP09). All Feature Classes can be linked to the DataSources table via DataSourcesID field/attribute to determine the geologic source and scale for the data. Feature classes included with dataset Spatial data feature classes: CartographicLines--Cross-section line. CartographicPoints--Point decorations for various point feature classes. ContactsAndFaults--Geologic map unit boundaries and ALL faults used to build map unit polygons and fault lines that are dangling arcs. Use the "type" field to classify contact type or to link to the Glossary. Use the "FaultMovement" field to classify fault type or to link to the Glossary. Geologic Points--Geologic Point features showing located geologic (point) objects, e.g., fault breccia, non-oriented structure symbols. Use the "Type" field to classify by type and to link to Glossary if desired. Orientations Points--Orientation Point data. Includes strike and dip and foliations measurements. Use the "type" field to classify or to link to the Glossary. GeologicLines--Polylines depicting geologic mapped axial fold traces. Use the "type" field to classify or to link to the Glossary. GeologicPoints--Features showing located geologic (point) objects, e.g., fault breccia, non-oriented structure symbols. Use the "Type" field to classify by type and to link to Glossary if desired. MapUnitPolygons--Geologic map units polygons. These are the main features of this dataset. Descriptions for these units can be found in the DescriptionOfMapUnits feature class/table. Link via the "MapUnit" field.

## Credits

Science data credit: William M. Phillips, Renee L. Love, Dennis M. Feeney GIS credit: Linda Tedrow and Loudon R. Stanford

## Use limitations

Geologic map data intended for non-site-specific use. These data were compiled from 1:24,000 geologic mapping and should not be used at larger scales, e.g., 1:12,000. Use the DataSources table and the DataSourceID in each Feature Class to determine original intended scale. The Idaho Geological Survey does not guarantee this map or digital data to be free of errors nor assume liability for interpretations made from this map or digital data, or decisions based thereon.

## Extent

There is no extent for this item.

## Scale Range

**Maximum (zoomed in)** 1:5,000

**Minimum (zoomed out)** 1:150,000,000

## ArcGIS Metadata ►

### Topics and Keywords ►

**OTHER KEYWORDS** Idaho., Madison County, Geoscientific Information, GIS, Geologic Map, Bonneville County, Hawley Gulch Quadrangle

[Hide Topics and Keywords ▲](#)

### Citation ►

**TITLE** Geologic Map of the Hawley Gulch Quadrangle, Bonneville and Madison Counties, Idaho, William M. Phillips, Renee L. Love, Dennis M. Feeney, 2019, Idaho Geological Survey Digital Web Map 186 (DWM-186)

**PUBLICATION DATE** 2019-03-04 00:00:00

[Hide Citation ▲](#)

### Citation Contacts ►

**RESPONSIBLE PARTY**

**INDIVIDUAL'S NAME** Idaho Geological Survey

**ORGANIZATION'S NAME** State of Idaho

**CONTACT'S ROLE** originator

[Hide Citation Contacts ▲](#)

### Resource Details ►

**DATASET LANGUAGES** English

**DATASET CHARACTER SET** utf8 - 8 bit UCS Transfer Format

STATUS completed

#### CREDITS

Science data credit: William M. Phillips, Renee L. Love, Dennis M. Feeney GIS credit: Linda Tedrow and Loudon R. Stanford

[Hide Resource Details ▲](#)

## Extents ►

#### EXTENT

##### GEOGRAPHIC EXTENT

##### BOUNDING RECTANGLE

WEST LONGITUDE -111.62

EAST LONGITUDE -111.5

SOUTH LATITUDE 43.62

NORTH LATITUDE 43.75

EXTENT CONTAINS THE RESOURCE Yes

[Hide Extents ▲](#)

## Resource Maintenance ►

#### RESOURCE MAINTENANCE

UPDATE FREQUENCY as needed

[Hide Resource Maintenance ▲](#)

## Resource Constraints ►

#### CONSTRAINTS

##### LIMITATIONS OF USE

Geologic map data intended for non-site-specific use. These data were compiled from 1:24,000 geologic mapping and should not be used at larger scales, e.g., 1:12,000. Use the DataSources table and the DataSourceID in each Feature Class to determine original intended scale. The Idaho Geological Survey does not guarantee this map or digital data to be free of errors nor assume liability for interpretations made from this map or digital data, or decisions based thereon.

[Hide Resource Constraints ▲](#)

## Geoprocessing history ►

#### PROCESS

##### PROCESS NAME

DATE 2019-02-27 14:46:32

TOOL LOCATION c:\program files (x86)\arcgis\desktop10.5\ArcToolbox\Toolboxes\Data Management Tools.tbx\CreateFileGDB

##### COMMAND ISSUED

CreateFileGDB W:\DATABASE\_MAPS\24K\Statemap2015\Rexburg\Hawley\_Gulch\DWM-186\theGDB HawleyGulch\_DWM-186-IGS.gdb CURRENT

INCLUDE IN LINEAGE WHEN EXPORTING METADATA No

[Hide Geoprocessing history ▲](#)

## Metadata Details ▶

METADATA LANGUAGE English  
METADATA CHARACTER SET utf8 - 8 bit UCS Transfer Format

SCOPE OF THE DATA DESCRIBED BY THE METADATA dataset

LAST UPDATE 2019-03-04

### ARCGIS METADATA PROPERTIES

METADATA FORMAT ArcGIS 1.0  
METADATA STYLE FGDC CSDGM Metadata  
STANDARD OR PROFILE USED TO EDIT METADATA FGDC

CREATED IN ARCGIS FOR THE ITEM 2019-02-27 14:46:32  
LAST MODIFIED IN ARCGIS FOR THE ITEM 2019-03-04 14:53:44

AUTOMATIC UPDATES  
HAVE BEEN PERFORMED No

[Hide Metadata Details ▲](#)

## Metadata Contacts ▶

### METADATA CONTACT

INDIVIDUAL'S NAME Idaho Geological Survey  
ORGANIZATION'S NAME State of Idaho  
CONTACT'S ROLE originator

### CONTACT INFORMATION ▶

PHONE  
VOICE 208-885-7991

### ADDRESS

DELIVERY POINT University of Idaho  
CITY Moscow  
ADMINISTRATIVE AREA Idaho  
POSTAL CODE 83844-3014  
COUNTRY US  
E-MAIL ADDRESS [igs@uidaho.edu](mailto:igs@uidaho.edu)

[Hide Contact information ▲](#)

[Hide Metadata Contacts ▲](#)

## Thumbnail and Enclosures ▶

THUMBNAIL  
THUMBNAIL TYPE JPG

[Hide Thumbnail and Enclosures ▲](#)