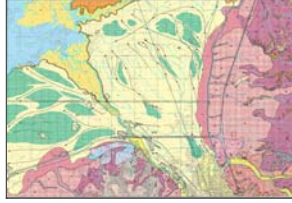


SURFICIAL GEOLOGIC MAP OF THE MICHAUD AND POCATELLO NORTH QUADRANGLES, BANNOCK AND POWER COUNTIES, IDAHO (2002)



Tags

surficial geologic map, Michaud and Pocatello quadrangles, Bannock County, Power County, Idaho, Portneuf Valley, Pocatello Range, Bannock Range

Summary

The map area includes the northern half of the city of Pocatello, which lies in the northern Portneuf Valley between the Pocatello Range to the east and the Bannock Range to the southwest.

These data were created from original field work collected at the scale of 1:24,000. Data source is the IGS publication SGM-14, Surficial Geologic Map of the Michaud and Pocatello North Quadrangles, Bannock and Power Counties, Idaho, 2002. This Personal Geodatabase (and File Geodatabase) is approximately compliant with the draft standard for publication of digital geologic maps (NCGMP09). All Feature Classes can be linked to the DataSources table via DataSourcesID field/attribute to determine the geologic source for the data.

Description

These data were created from original field work collected at the scale of 1:24,000. Data source is the IGS publication SGM-14, Surficial Geologic Map of the Michaud and Pocatello North Quadrangles, Bannock and Power Counties, Idaho, 2002. This Personal Geodatabase (and File Geodatabase) is approximately compliant with the draft standard for publication of digital geologic maps (NCGMP09). All Feature Classes can be linked to the DataSources table via DataSourcesID field/attribute to determine the geologic source for the data.

The surficial geologic map of the Michaud and Pocatello quadrangles provides basic data on the geologic materials found at the surface and shallow subsurface. The map is essential for evaluating the urban impact on the land and for planning the area's growth. The information is directed at a broad range of specialists concerned with land development and its consequences as an increasing population places greater demands on the region's natural resources. Details from the map function, for example, in assessing slope stability, foundation design, sewage drainage, solid waste sites, seismic shaking hazards, and the extent and limits of the potable ground-water supply.

The information depicted at this scale furnishes a useful overview of the area's geology but is not a substitute for site-specific geotechnical evaluations.

Feature classes included in the Geodatabase dataset:

(Look in folder "Michaud_Poky_N_SGM-14_ShapeFiles" for shape file versions)

Spatial data feature classes:

Contacts--Geologic map unit boundaries. Contacts only, no dangler faults. Used to build map unit polygons

ContactsAndFaults--Geologic map unit boundaries and ALL faults included. This includes dangler fault lines. Use the "type" field to classify or to link to the Glossary.

GeologicLines--Polylines depicting geologic mapped features, e.g., landslide headwall scarps, terrace scarps, or avalanche trace.

GravelBarOverLayPoly--Polygon areas of lenticular Bonneville Flood bar forms deposited on interfluves among the channeled-flow pathways.

GravelBarOverLayBdys-- Boundary polylines of lenticular Bonneville Flood bar forms deposited on interfluves among the channeled-flow pathways.

GravelBar_MapUnitCentroids --Center points of areas of lenticular Bonneville Flood bar forms deposited on interfluves among the channeled-flow pathways. LoessOverLayBdys--Boundary polylines of areas of loess deposits.

LoessOverLayCentroids--Center points of loess polygon deposits.

LoessOverLayPolys--Areas of loess deposits.

MapUnitCentroids-- The geometric centers of the Map Unit Polygon feature class that includes the polygon attributes.

MapUnitPolygons--Geologic map unit polygons. These are the main feature of this dataset. Descriptions for these units can be found in the DescriptionOfMapUnits feature class/table.

Orientations Points--Orientation Point data. For example, strike and dip and foliations measurements. Intended for non-site-specific investigations. Use the "type" field to classify or to link to the Glossary.

Non Spatial data tables:

Note: Look in folder "Michaud_Poky_N_ShapeFiles \Non-SpatialTables" for non-Microsoft versions of these tables. Two types: dBase III, and .csv (comma delimited text).

DescriptionOfMapUnits--Table with map unit descriptions. Use MapUnit field to link to MapUnitPolygons or Dikes.

Glossary--Look up table with explanations for geologic features found in all spatial classes. For example, moraine_crest: Definition--glacial moraine ridge crest. Features in feature classes can be linked to Glossary via "Type" in feature class to "IGSGeoType" in Glossary.

DataSources--Sources of geologic mapping. Link via DataSourceID in feature class to DataSources_ID in Sources.

DataDictionary—Listing and information about fields in most Feature Classes and tables

Credits

Science Credit: Kurt L. Othberg

GIS Credit: Loudon R. Stanford, William R. Schuster, and Jane S. Freed

GIS Contact: Linda Tedrow

Use limitations

Geologic map data intended for non-site-specific use. These data were compiled from 1:24,000 geologic mapping and should not be used at larger scales, e.g., 1:12,000. Use the DataSources table and the DataSourceID in each Feature Class (but especially the ContactsAndFaults FeatureClass/Layer) to determine original intended scale.

The Idaho Geological Survey does not guarantee this map or digital data to be free of errors nor assume liability for interpretations made from this map or digital data, or decisions based thereon.

Extent

West -112.6 **East** -112.375
North 43 **South** 42.875

Scale Range

Maximum (zoomed in) 1:5,000
Minimum (zoomed out) 1:150,000,000

ArcGIS Metadata ►

Citation ►

TITLE SURFICIAL GEOLOGIC MAP OF THE MICHAUD AND POCATELLO NORTH QUADRANGLES, BANNOCK AND POWER COUNTIES, IDAHO (2002)
PUBLICATION DATE 2018-03-09 01:00:00
REVISION DATE 2018-03-06 01:00:00

SERIES

NAME Suficial Geologic Map Series
ISSUE 14

[Hide Citation ▲](#)

Citation Contacts ►

RESPONSIBLE PARTY

INDIVIDUAL'S NAME Idaho Geological Survey
CONTACT'S ROLE originator

CONTACT INFORMATION ►

PHONE
VOICE (208) 885-7991

ADDRESS

TYPE postal
DELIVERY POINT 875 Perimeter Drive MS 3014
CITY Moscow
ADMINISTRATIVE AREA ID
POSTAL CODE 83844-3014
COUNTRY US
E-MAIL ADDRESS igs@uidaho.edu

[Hide Contact information ▲](#)

[Hide Citation Contacts ▲](#)

Resource Details ►

DATASET CHARACTER SET utf8 - 8 bit UCS Transfer Format

STATUS completed

CREDITS

Science Credit: Kurt L. Othberg

GIS Credit: Loudon R. Stanford, William R. Schuster, and Jane S. Freed

GIS Contact: Linda Tedrow

ARCGIS ITEM PROPERTIES

* LOCATION file://\igs-rift\shared\DATABASE_MAPS\GEOLOGY_tile_project\Surficial\Michaud_PocyN_SGM-14\GIS_NCGMP09\Michaud_Poky_N_SGM-14\MichPocyNSurf_pGDB.mdb
 * ACCESS PROTOCOL Local Area Network

[Hide Resource Details ▲](#)

Extents ►

EXTENT

GEOGRAPHIC EXTENT

BOUNDING RECTANGLE

EXTENT TYPE Extent used for searching
 WEST LONGITUDE -112.6
 EAST LONGITUDE -112.375
 SOUTH LATITUDE 42.875
 NORTH LATITUDE 43

[Hide Extents ▲](#)

Resource Maintenance ►

RESOURCE MAINTENANCE

UPDATE FREQUENCY as needed

[Hide Resource Maintenance ▲](#)

Resource Constraints ►

CONSTRAINTS

LIMITATIONS OF USE

Geologic map data intended for non-site-specific use. These data were compiled from 1:24,000 geologic mapping and should not be used at larger scales, e.g., 1:12,000. Use the DataSources table and the DataSourceID in each Feature Class (but especially the ContactsAndFaults FeatureClass/Layer) to determine original intended scale.

The Idaho Geological Survey does not guarantee this map or digital data to be free of errors nor assume liability for interpretations made from this map or digital data, or decisions based thereon.

[Hide Resource Constraints ▲](#)

Data Quality ►

SCOPE OF QUALITY INFORMATION ►

RESOURCE LEVEL dataset

[Hide Scope of quality information ▲](#)

DATA QUALITY REPORT ►

MEASURE DESCRIPTION

Horizontal accuracy is difficult to quantify in geologic mapping of this type. User should use original map scale (linked to DataSources table in this data set via "DataSource_ID" to determine relative accuracy of groups of map objects in the data set. ---EXAMPLE OF DETERMINING H ACCURACY: 1:24k map objects in the data set have a placement h-accuracy => 80(+/-) feet (.04 inch x 2000 ft/inch @1:24,000) for a CERTAIN line type. Accuracy is proportionally less for smaller scales and even less for other line types (see "AuthorConfidence" field in each data layer/feature class). Map data used in compilation was visually compared to original for horizontal accuracy.

EVALUATION METHOD

Geologic map data are visually checked against original map data for completeness. Accuracy is determined by at least two factors: quality of capture (digitizing) consistency and the quality of the original geology. The quality of the original geology is by far the most important for determining the quality of attribute accuracy.

[Hide Data quality report ▲](#)

[Hide Data Quality ▲](#)

Geoprocessing history ►

PROCESS

PROCESS NAME

DATE 2017-12-16 14:26:21

TOOL LOCATION c:\program files (x86)\arcgis\desktop10.3\ArcToolbox\Toolboxes\Data Management Tools.tbx\CreatePersonalGDB

COMMAND ISSUED

CreatePersonalGDB W:\DATABASE_MAPS\GEOLOGY_tile_project\Surficial\Michaud_PocyN_SGM-14\GIS_NCGMP09\Round_7 /MichPocyNSurf_pGDB CURRENT

INCLUDE IN LINEAGE WHEN EXPORTING METADATA No

PROCESS

PROCESS NAME

DATE 2017-12-16 14:26:43

TOOL LOCATION c:\program files (x86)\arcgis\desktop10.3\ArcToolbox\Toolboxes\Conversion Tools.tbx\FeatureClassToGeodatabase

COMMAND ISSUED

FeatureClassToGeodatabase W:\DATABASE_MAPS\GEOLOGY_tile_project\Surficial\Michaud_Pocyn_SGM-14\GIS_NCGMP09
\Round_7\MapUnitPolys.SHP W:\DATABASE_MAPS\GEOLOGY_tile_project\Surficial\Michaud_Pocyn_SGM-14\GIS_NCGMP09
\Round_7\MichPocynSurf_pGDB.mdb

INCLUDE IN LINEAGE WHEN EXPORTING METADATA No

PROCESS

PROCESS NAME

DATE 2017-12-16 14:26:46

TOOL LOCATION c:\program files (x86)\arcgis\desktop10.3\ArcToolbox\Toolboxes\Conversion Tools.tbx\FeatureClassToGeodatabase

COMMAND ISSUED

FeatureClassToGeodatabase W:\DATABASE_MAPS\GEOLOGY_tile_project\Surficial\Michaud_Pocyn_SGM-14\GIS_NCGMP09
\Round_7/Contacts.shp W:\DATABASE_MAPS\GEOLOGY_tile_project\Surficial\Michaud_Pocyn_SGM-14\GIS_NCGMP09
\Round_7\MichPocynSurf_pGDB.mdb

INCLUDE IN LINEAGE WHEN EXPORTING METADATA No

PROCESS

PROCESS NAME

DATE 2017-12-16 14:26:48

TOOL LOCATION c:\program files (x86)\arcgis\desktop10.3\ArcToolbox\Toolboxes\Conversion Tools.tbx\FeatureClassToGeodatabase

COMMAND ISSUED

FeatureClassToGeodatabase W:\DATABASE_MAPS\GEOLOGY_tile_project\Surficial\Michaud_Pocyn_SGM-14\GIS_NCGMP09
\Round_7/OrientationPoints.SHP W:\DATABASE_MAPS\GEOLOGY_tile_project\Surficial\Michaud_Pocyn_SGM-14\GIS_NCGMP09
\Round_7\MichPocynSurf_pGDB.mdb

INCLUDE IN LINEAGE WHEN EXPORTING METADATA No

PROCESS

PROCESS NAME

DATE 2017-12-16 14:26:51

TOOL LOCATION c:\program files (x86)\arcgis\desktop10.3\ArcToolbox\Toolboxes\Conversion Tools.tbx\FeatureClassToGeodatabase

COMMAND ISSUED

FeatureClassToGeodatabase W:\DATABASE_MAPS\GEOLOGY_tile_project\Surficial\Michaud_Pocyn_SGM-14\GIS_NCGMP09
\Round_7/Faults.shp W:\DATABASE_MAPS\GEOLOGY_tile_project\Surficial\Michaud_Pocyn_SGM-14\GIS_NCGMP09
\Round_7\MichPocynSurf_pGDB.mdb

INCLUDE IN LINEAGE WHEN EXPORTING METADATA No

PROCESS

PROCESS NAME

DATE 2017-12-16 14:26:53

TOOL LOCATION c:\program files (x86)\arcgis\desktop10.3\ArcToolbox\Toolboxes\Conversion Tools.tbx\FeatureClassToGeodatabase

COMMAND ISSUED

FeatureClassToGeodatabase W:\DATABASE_MAPS\GEOLOGY_tile_project\Surficial\Michaud_Pocyn_SGM-14\GIS_NCGMP09
\Round_7/GeologicPoints.SHP W:\DATABASE_MAPS\GEOLOGY_tile_project\Surficial\Michaud_Pocyn_SGM-14\GIS_NCGMP09
\Round_7\MichPocynSurf_pGDB.mdb

INCLUDE IN LINEAGE WHEN EXPORTING METADATA No

PROCESS

PROCESS NAME

DATE 2017-12-16 14:26:56

TOOL LOCATION c:\program files (x86)\arcgis\desktop10.3\ArcToolbox\Toolboxes\Conversion Tools.tbx\FeatureClassToGeodatabase

COMMAND ISSUED

FeatureClassToGeodatabase W:\DATABASE_MAPS\GEOLOGY_tile_project\Surficial\Michaud_Pocyn_SGM-14\GIS_NCGMP09
\Round_7/Dikes.shp W:\DATABASE_MAPS\GEOLOGY_tile_project\Surficial\Michaud_Pocyn_SGM-14\GIS_NCGMP09
\Round_7\MichPocynSurf_pGDB.mdb

INCLUDE IN LINEAGE WHEN EXPORTING METADATA No

PROCESS

PROCESS NAME

DATE 2017-12-16 14:26:58

TOOL LOCATION c:\program files (x86)\arcgis\desktop10.3\ArcToolbox\Toolboxes\Conversion Tools.tbx\FeatureClassToGeodatabase

COMMAND ISSUED

FeatureClassToGeodatabase W:\DATABASE_MAPS\GEOLOGY_tile_project\Surficial\Michaud_Pocyn_SGM-14\GIS_NCGMP09
\Round_7/GeologicLines.SHP W:\DATABASE_MAPS\GEOLOGY_tile_project\Surficial\Michaud_Pocyn_SGM-14\GIS_NCGMP09
\Round_7\MichPocynSurf_pGDB.mdb

INCLUDE IN LINEAGE WHEN EXPORTING METADATA No

PROCESS

PROCESS NAME

DATE 2017-12-16 14:27:01

TOOL LOCATION c:\program files (x86)\arcgis\desktop10.3\ArcToolbox\Toolboxes\Conversion Tools.tbx\FeatureClassToGeodatabase

COMMAND ISSUED

FeatureClassToGeodatabase W:\DATABASE_MAPS\GEOLOGY_tile_project\Surficial\Michaud_Pocyn_SGM-14\GIS_NCGMP09
\Round_7/CartographicLines.SHP W:\DATABASE_MAPS\GEOLOGY_tile_project\Surficial\Michaud_Pocyn_SGM-14\GIS_NCGMP09
\Round_7\MichPocynSurf_pGDB.mdb

INCLUDE IN LINEAGE WHEN EXPORTING METADATA No

PROCESS

PROCESS NAME

DATE 2017-12-16 14:27:04

TOOL LOCATION c:\program files (x86)\arcgis\desktop10.3\ArcToolbox\Toolboxes\Conversion Tools.tbx\FeatureClassToGeodatabase

COMMAND ISSUED
FeatureClassToGeodatabase W:\DATABASE_MAPS\GEOLOGY_tile_project\Surficial\Michaud_Pocyn_SGM-14\GIS_NCGMP09
\Round_7/ContactsAndFaults.SHP W:\DATABASE_MAPS\GEOLOGY_tile_project\Surficial\Michaud_Pocyn_SGM-14\GIS_NCGMP09
\Round_7\MichPocynSurf_pGDB.mdb
INCLUDE IN LINEAGE WHEN EXPORTING METADATA No

PROCESS
PROCESS NAME
DATE 2017-12-16 14:27:06
TOOL LOCATION c:\program files (x86)\arcgis\desktop10.3\ArcToolbox\Toolboxes\Conversion Tools.tbx\FeatureClassToGeodatabase
COMMAND ISSUED
FeatureClassToGeodatabase W:\DATABASE_MAPS\GEOLOGY_tile_project\Surficial\Michaud_Pocyn_SGM-14\GIS_NCGMP09
\Round_7/gravelbar_MapUnitPolys.SHP W:\DATABASE_MAPS\GEOLOGY_tile_project\Surficial\Michaud_Pocyn_SGM-14\GIS_NCGMP09
\Round_7\MichPocynSurf_pGDB.mdb
INCLUDE IN LINEAGE WHEN EXPORTING METADATA No

PROCESS
PROCESS NAME
DATE 2017-12-16 14:27:09
TOOL LOCATION c:\program files (x86)\arcgis\desktop10.3\ArcToolbox\Toolboxes\Conversion Tools.tbx\FeatureClassToGeodatabase
COMMAND ISSUED
FeatureClassToGeodatabase W:\DATABASE_MAPS\GEOLOGY_tile_project\Surficial\Michaud_Pocyn_SGM-14\GIS_NCGMP09
\Round_7/gravelbar_Bdys.SHP W:\DATABASE_MAPS\GEOLOGY_tile_project\Surficial\Michaud_Pocyn_SGM-14\GIS_NCGMP09
\Round_7\MichPocynSurf_pGDB.mdb
INCLUDE IN LINEAGE WHEN EXPORTING METADATA No

PROCESS
PROCESS NAME
DATE 2017-12-16 14:27:11
TOOL LOCATION c:\program files (x86)\arcgis\desktop10.3\ArcToolbox\Toolboxes\Conversion Tools.tbx\FeatureClassToGeodatabase
COMMAND ISSUED
FeatureClassToGeodatabase W:\DATABASE_MAPS\GEOLOGY_tile_project\Surficial\Michaud_Pocyn_SGM-14\GIS_NCGMP09
\Round_7\Q1_MapUnitPolys.SHP W:\DATABASE_MAPS\GEOLOGY_tile_project\Surficial\Michaud_Pocyn_SGM-14\GIS_NCGMP09
\Round_7\MichPocynSurf_pGDB.mdb
INCLUDE IN LINEAGE WHEN EXPORTING METADATA No

PROCESS
PROCESS NAME
DATE 2017-12-16 14:27:14
TOOL LOCATION c:\program files (x86)\arcgis\desktop10.3\ArcToolbox\Toolboxes\Conversion Tools.tbx\FeatureClassToGeodatabase
COMMAND ISSUED
FeatureClassToGeodatabase W:\DATABASE_MAPS\GEOLOGY_tile_project\Surficial\Michaud_Pocyn_SGM-14\GIS_NCGMP09
\Round_7\Q1_Bdys.shp W:\DATABASE_MAPS\GEOLOGY_tile_project\Surficial\Michaud_Pocyn_SGM-14\GIS_NCGMP09
\Round_7\MichPocynSurf_pGDB.mdb
INCLUDE IN LINEAGE WHEN EXPORTING METADATA No

PROCESS
PROCESS NAME
DATE 2017-12-16 14:27:30
TOOL LOCATION c:\program files (x86)\arcgis\desktop10.3\ArcToolbox\Toolboxes\Conversion Tools.tbx\TableToGeodatabase
COMMAND ISSUED
TableToGeodatabase W:\DATABASE_MAPS\GEOLOGY_tile_project\Surficial\Michaud_Pocyn_SGM-14\GIS_NCGMP09\Round_7/attributes-
GDB.mdb/C W:\DATABASE_MAPS\GEOLOGY_tile_project\Surficial\Michaud_Pocyn_SGM-14\GIS_NCGMP09
\Round_7\MichPocynSurf_pGDB.mdb
INCLUDE IN LINEAGE WHEN EXPORTING METADATA No

PROCESS
PROCESS NAME
DATE 2017-12-16 14:27:31
TOOL LOCATION c:\program files (x86)\arcgis\desktop10.3\ArcToolbox\Toolboxes\Conversion Tools.tbx\TableToGeodatabase
COMMAND ISSUED
TableToGeodatabase W:\DATABASE_MAPS\GEOLOGY_tile_project\Surficial\Michaud_Pocyn_SGM-14\GIS_NCGMP09\Round_7/attributes-
GDB.mdb/CAF W:\DATABASE_MAPS\GEOLOGY_tile_project\Surficial\Michaud_Pocyn_SGM-14\GIS_NCGMP09
\Round_7\MichPocynSurf_pGDB.mdb
INCLUDE IN LINEAGE WHEN EXPORTING METADATA No

PROCESS
PROCESS NAME
DATE 2017-12-16 14:27:32
TOOL LOCATION c:\program files (x86)\arcgis\desktop10.3\ArcToolbox\Toolboxes\Conversion Tools.tbx\TableToGeodatabase
COMMAND ISSUED
TableToGeodatabase W:\DATABASE_MAPS\GEOLOGY_tile_project\Surficial\Michaud_Pocyn_SGM-14\GIS_NCGMP09\Round_7/attributes-
GDB.mdb/CL W:\DATABASE_MAPS\GEOLOGY_tile_project\Surficial\Michaud_Pocyn_SGM-14\GIS_NCGMP09
\Round_7\MichPocynSurf_pGDB.mdb
INCLUDE IN LINEAGE WHEN EXPORTING METADATA No

PROCESS
PROCESS NAME
DATE 2017-12-16 14:27:34
TOOL LOCATION c:\program files (x86)\arcgis\desktop10.3\ArcToolbox\Toolboxes\Conversion Tools.tbx\TableToGeodatabase
COMMAND ISSUED
TableToGeodatabase W:\DATABASE_MAPS\GEOLOGY_tile_project\Surficial\Michaud_Pocyn_SGM-14\GIS_NCGMP09\Round_7/attributes-
GDB.mdb/D W:\DATABASE_MAPS\GEOLOGY_tile_project\Surficial\Michaud_Pocyn_SGM-14\GIS_NCGMP09
\Round_7\MichPocynSurf_pGDB.mdb
INCLUDE IN LINEAGE WHEN EXPORTING METADATA No

PROCESS

PROCESS NAME

DATE 2017-12-16 14:27:35

TOOL LOCATION c:\program files (x86)\arcgis\desktop10.3\ArcToolbox\Toolboxes\Conversion Tools.tbx\TableToGeodatabase

COMMAND ISSUED

TableToGeodatabase W:\DATABASE_MAPS\GEOLOGY_tile_project\Surficial\Michaud_PocyN_SGM-14\GIS_NCGMP09\Round_7\attributes-GDB.mdb/F W:\DATABASE_MAPS\GEOLOGY_tile_project\Surficial\Michaud_PocyN_SGM-14\GIS_NCGMP09\Round_7\MichPocyNSurf_pGDB.mdb

INCLUDE IN LINEAGE WHEN EXPORTING METADATA No

PROCESS

PROCESS NAME

DATE 2017-12-16 14:27:37

TOOL LOCATION c:\program files (x86)\arcgis\desktop10.3\ArcToolbox\Toolboxes\Conversion Tools.tbx\TableToGeodatabase

COMMAND ISSUED

TableToGeodatabase W:\DATABASE_MAPS\GEOLOGY_tile_project\Surficial\Michaud_PocyN_SGM-14\GIS_NCGMP09\Round_7\attributes-GDB.mdb/GL W:\DATABASE_MAPS\GEOLOGY_tile_project\Surficial\Michaud_PocyN_SGM-14\GIS_NCGMP09\Round_7\MichPocyNSurf_pGDB.mdb

INCLUDE IN LINEAGE WHEN EXPORTING METADATA No

PROCESS

PROCESS NAME

DATE 2017-12-16 14:27:38

TOOL LOCATION c:\program files (x86)\arcgis\desktop10.3\ArcToolbox\Toolboxes\Conversion Tools.tbx\TableToGeodatabase

COMMAND ISSUED

TableToGeodatabase W:\DATABASE_MAPS\GEOLOGY_tile_project\Surficial\Michaud_PocyN_SGM-14\GIS_NCGMP09\Round_7\attributes-GDB.mdb/GP W:\DATABASE_MAPS\GEOLOGY_tile_project\Surficial\Michaud_PocyN_SGM-14\GIS_NCGMP09\Round_7\MichPocyNSurf_pGDB.mdb

INCLUDE IN LINEAGE WHEN EXPORTING METADATA No

PROCESS

PROCESS NAME

DATE 2017-12-16 14:27:39

TOOL LOCATION c:\program files (x86)\arcgis\desktop10.3\ArcToolbox\Toolboxes\Conversion Tools.tbx\TableToGeodatabase

COMMAND ISSUED

TableToGeodatabase W:\DATABASE_MAPS\GEOLOGY_tile_project\Surficial\Michaud_PocyN_SGM-14\GIS_NCGMP09\Round_7\attributes-GDB.mdb/MUP W:\DATABASE_MAPS\GEOLOGY_tile_project\Surficial\Michaud_PocyN_SGM-14\GIS_NCGMP09\Round_7\MichPocyNSurf_pGDB.mdb

INCLUDE IN LINEAGE WHEN EXPORTING METADATA No

PROCESS

PROCESS NAME

DATE 2017-12-16 14:27:41

TOOL LOCATION c:\program files (x86)\arcgis\desktop10.3\ArcToolbox\Toolboxes\Conversion Tools.tbx\TableToGeodatabase

COMMAND ISSUED

TableToGeodatabase W:\DATABASE_MAPS\GEOLOGY_tile_project\Surficial\Michaud_PocyN_SGM-14\GIS_NCGMP09\Round_7\attributes-GDB.mdb/OP W:\DATABASE_MAPS\GEOLOGY_tile_project\Surficial\Michaud_PocyN_SGM-14\GIS_NCGMP09\Round_7\MichPocyNSurf_pGDB.mdb

INCLUDE IN LINEAGE WHEN EXPORTING METADATA No

PROCESS

PROCESS NAME

DATE 2017-12-16 14:27:42

TOOL LOCATION c:\program files (x86)\arcgis\desktop10.3\ArcToolbox\Toolboxes\Conversion Tools.tbx\TableToGeodatabase

COMMAND ISSUED

TableToGeodatabase W:\DATABASE_MAPS\GEOLOGY_tile_project\Surficial\Michaud_PocyN_SGM-14\GIS_NCGMP09\Round_7\attributes-GDB.mdb/OverlayUnitContacts_gravelbar W:\DATABASE_MAPS\GEOLOGY_tile_project\Surficial\Michaud_PocyN_SGM-14\GIS_NCGMP09\Round_7\MichPocyNSurf_pGDB.mdb

INCLUDE IN LINEAGE WHEN EXPORTING METADATA No

PROCESS

PROCESS NAME

DATE 2017-12-16 14:27:44

TOOL LOCATION c:\program files (x86)\arcgis\desktop10.3\ArcToolbox\Toolboxes\Conversion Tools.tbx\TableToGeodatabase

COMMAND ISSUED

TableToGeodatabase W:\DATABASE_MAPS\GEOLOGY_tile_project\Surficial\Michaud_PocyN_SGM-14\GIS_NCGMP09\Round_7\attributes-GDB.mdb/OverlayUnitContacts_ql W:\DATABASE_MAPS\GEOLOGY_tile_project\Surficial\Michaud_PocyN_SGM-14\GIS_NCGMP09\Round_7\MichPocyNSurf_pGDB.mdb

INCLUDE IN LINEAGE WHEN EXPORTING METADATA No

PROCESS

PROCESS NAME

DATE 2017-12-16 14:27:45

TOOL LOCATION c:\program files (x86)\arcgis\desktop10.3\ArcToolbox\Toolboxes\Conversion Tools.tbx\TableToGeodatabase

COMMAND ISSUED

TableToGeodatabase W:\DATABASE_MAPS\GEOLOGY_tile_project\Surficial\Michaud_PocyN_SGM-14\GIS_NCGMP09\Round_7\attributes-GDB.mdb/OverlayUnitPolygons_gravelbar W:\DATABASE_MAPS\GEOLOGY_tile_project\Surficial\Michaud_PocyN_SGM-14\GIS_NCGMP09\Round_7\MichPocyNSurf_pGDB.mdb

INCLUDE IN LINEAGE WHEN EXPORTING METADATA No

PROCESS

PROCESS NAME

DATE 2017-12-16 14:27:47

TOOL LOCATION c:\program files (x86)\arcgis\desktop10.3\ArcToolbox\Toolboxes\Conversion Tools.tbx\TableToGeodatabase

COMMAND ISSUED

TableToGeodatabase W:\DATABASE_MAPS\GEOLOGY_tile_project\Surficial\Michaud_PocyN_SGM-14\GIS_NCGMP09\Round_7\attributes-

GDB.mdb/OverlayUnitPolygons_Q1 W:\DATABASE_MAPS\GEOLOGY_tile_project\Surficial\Michaud_PocyN_SGM-14\GIS_NCGMP09
 \Round_7\MichPocyNSurf_pGDB.mdb
 INCLUDE IN LINEAGE WHEN EXPORTING METADATA No

PROCESS

PROCESS NAME
 DATE 2017-12-16 14:27:48
 TOOL LOCATION c:\program files (x86)\arcgis\desktop10.3\ArcToolbox\Toolboxes\Conversion Tools.tbx\TableToGeodatabase
 COMMAND ISSUED
 TableToGeodatabase W:\DATABASE_MAPS\GEOLOGY_tile_project\Surficial\Michaud_PocyN_SGM-14\GIS_NCGMP09\Round_7\attributes-
 GDB.mdb/SOURCESFile W:\DATABASE_MAPS\GEOLOGY_tile_project\Surficial\Michaud_PocyN_SGM-14\GIS_NCGMP09
 \Round_7\MichPocyNSurf_pGDB.mdb
 INCLUDE IN LINEAGE WHEN EXPORTING METADATA No

PROCESS

PROCESS NAME
 DATE 2017-12-16 14:27:49
 TOOL LOCATION c:\program files (x86)\arcgis\desktop10.3\ArcToolbox\Toolboxes\Conversion Tools.tbx\TableToGeodatabase
 COMMAND ISSUED
 TableToGeodatabase W:\DATABASE_MAPS\GEOLOGY_tile_project\Surficial\Michaud_PocyN_SGM-14\GIS_NCGMP09\Round_7\attributes-
 GDB.mdb/XGLOSSARYNOTFOUND W:\DATABASE_MAPS\GEOLOGY_tile_project\Surficial\Michaud_PocyN_SGM-14\GIS_NCGMP09
 \Round_7\MichPocyNSurf_pGDB.mdb
 INCLUDE IN LINEAGE WHEN EXPORTING METADATA No

PROCESS

PROCESS NAME
 DATE 2017-12-16 14:27:51
 TOOL LOCATION c:\program files (x86)\arcgis\desktop10.3\ArcToolbox\Toolboxes\Conversion Tools.tbx\TableToGeodatabase
 COMMAND ISSUED
 TableToGeodatabase W:\DATABASE_MAPS\GEOLOGY_tile_project\Surficial\Michaud_PocyN_SGM-14\GIS_NCGMP09\Round_7\attributes-
 GDB.mdb/XIGSSourcenOTFOUND W:\DATABASE_MAPS\GEOLOGY_tile_project\Surficial\Michaud_PocyN_SGM-14\GIS_NCGMP09
 \Round_7\MichPocyNSurf_pGDB.mdb
 INCLUDE IN LINEAGE WHEN EXPORTING METADATA No

PROCESS

PROCESS NAME
 DATE 2017-12-16 14:30:22
 TOOL LOCATION c:\program files (x86)\arcgis\desktop10.3\ArcToolbox\Toolboxes\Data Management Tools.tbx\Compact
 COMMAND ISSUED
 Compact W:\DATABASE_MAPS\GEOLOGY_tile_project\Surficial\Michaud_PocyN_SGM-14\GIS_NCGMP09\Round_7\MichPocyNSurf_pGDB.mdb
 INCLUDE IN LINEAGE WHEN EXPORTING METADATA No

[Hide Geoprocessing history ▲](#)

Fields ►

OVERVIEW DESCRIPTION ►

ENTITY AND ATTRIBUTE OVERVIEW

See DataDictionary table in this dataset for complete listing of fields and attributes

[Hide Overview Description ▲](#)

[Hide Fields ▲](#)

Metadata Details ►

METADATA LANGUAGE English
 METADATA CHARACTER SET utf8 - 8 bit UCS Transfer Format

SCOPE OF THE DATA DESCRIBED BY THE METADATA dataset

LAST UPDATE 2018-03-06

ARCGIS METADATA PROPERTIES

METADATA FORMAT ArcGIS 1.0
 METADATA STYLE FGDC CSDGM Metadata
 STANDARD OR PROFILE USED TO EDIT METADATA FGDC

CREATED IN ARCGIS FOR THE ITEM 2018-03-06 09:25:13
 LAST MODIFIED IN ARCGIS FOR THE ITEM 2018-03-11 15:37:39

AUTOMATIC UPDATES

HAVE BEEN PERFORMED No

ITEM LOCATION HISTORY

ITEM COPIED OR MOVED 2018-03-06 09:25:13

FROM W:\DATABASE_MAPS\GEOLOGY_tile_project\Surficial\Michaud_PocyN_SGM-14\GIS_NCGMP09\Round_7\MichPocyNSurf_pGDB.mdb
 TO \\igs-rift\shared\DATABASE_MAPS\GEOLOGY_tile_project\Surficial\Michaud_PocyN_SGM-14\GIS_NCGMP09\Michaud_PocyN_SGM-14
 \MichPocyNSurf_pGDB.mdb

[Hide Metadata Details ▲](#)

Metadata Contacts ▶

METADATA CONTACT

INDIVIDUAL'S NAME Idaho Geological Survey
CONTACT'S ROLE originator

CONTACT INFORMATION ▶

PHONE
VOICE (208) 885-7991

ADDRESS

TYPE postal
DELIVERY POINT 875 Perimeter Drive MS 3014
CITY Moscow
ADMINISTRATIVE AREA ID
POSTAL CODE 83844-3014
COUNTRY US
E-MAIL ADDRESS igs@uidaho.edu

ONLINE RESOURCE

LOCATION http://www.idahogeology.org/Products/reverselook.asp?switch=title&value=Surficial_Geologic_Map_of_the_Michaud_and_Pocatello_North_Quadrangles,_Bannock_and_Power_Counties,_Idaho

[Hide Contact information](#) ▲

[Hide Metadata Contacts](#) ▲

Thumbnail and Enclosures ▶

THUMBNAIL

THUMBNAIL TYPE JPG

[Hide Thumbnail and Enclosures](#) ▲

FGDC Metadata (read-only) ▼