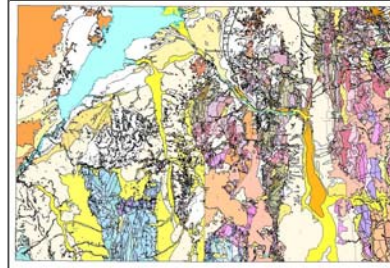


# Personal and File Geodatabase (GIS data) for the Geologic Map Compilation of the Pocatello 30 x 60 Minute Quadrangle, Idaho, 1999, Idaho Geological Survey Digital Technical Report 99-2 (T-99-2)

## ArcGIS Personal Geodatabase



## Tags

Geoscientific Information, Pocatello, Bannock County Idaho, Bingham County Idaho, Caribou County Idaho, Oneida County Idaho, Power County Idaho, geologic map, Idaho, geologic map GIS

## Summary

Digital geologic map data (GIS database) of the Geologic Map Compilation of the Pocatello 30 x 60 Minute Quadrangle, Idaho, 1999, Idaho Geological Survey Digital Technical Report 99-2 (T-99-2)

## Description

These data were compiled from existing geologic map data at scales of from 1:24,000 to 1:250,000. Data source is the IGS publication T-99-2, *Geologic Map Compilation of the Pocatello 30 x 60 Minute Quadrangle, Idaho*, 1999. This Personal Geodatabase (and File Geodatabase) is approximately compliant with the draft standard for publication of digital geologic maps (NCGMP09). All Feature Classes can be linked to the DataSources table via DataSourcesID field/attribute to determine the geologic source for the data.

## Feature classes included with dataset:

MapUnitCentroids--Map unit polygon annotations (Labels)

CartographicLines--Line decorations for various polyline feature classes, e.g., tics for landslide scarps

Contacts--Geologic map unit boundaries. Contacts only, no dangler faults. Used to build map unit polygons

ContactsAndFaults--Geologic map unit boundaries and ALL faults included. This includes dangler fault lines. Use the "type" field to classify or to link to the Glossary table.

Faults--Geologic faults. Includes all faults; both dangler faults and contact-faults. Use the "type" field to classify or to link to the Glossary table.

Geologic Points--Geologic Point features showing located geologic (point) objects, e.g., fault breccia, non-oriented structure symbols. Use the "Type" field to classify by type and to link to Glossary table if desired.

Orientations Points--Orientation Point data. For example, strike and dip and foliations measurements. Use the "type" field to classify or to link to the Glossary table.

GeologicLines--Polylines depicting geologic mapped features, e.g., landslide headwall scarps, terrace scarps, or avalanche trace.

MapUnitPolygons--Geologic map units polygons. These are the main feature of this dataset. Descriptions for these units can be found in the DescriptionOfMapUnits feature class/table.

Non Spatial data tables:

*Note: Look in folder "\Pocatello30x60\_T-99-2\_ShapeFiles \Non-SpatialTables" for non-Microsoft versions of these tables. Two types: dBase III, and .csv(comma delimited text).*

DescriptionOfMapUnits--Table with map unit descriptions. Use MapUnit field to link to MapUnitPolygons or Dikes (.CSV format only).

Glossary--Look up table with explanations for geologic features found in all spatial classes. For example, moraine\_crest: Definition--glacial moraine ridge crest. Features in feature classes can be linked to Glossary via "Type" in feature class to "IGSGeoType" in Glossary.

DataSources--Sources of geologic mapping. Link via DataSourceID in feature class to DataSources\_ID in Sources.

DataDictionary—Listing and information about fields in most Feature Classes and tables

## Credits

Science data credit: Paul Karl Link and Loudon R. Stanford

GIS credit: Loudon R. Stanford, William R. Schuster, Jane S. Freed, and Vance T. MacKubbin

## Use limitations

Geologic map data intended for non-site-specific use. These data were compiled from 1:24,000-1:250,000 geologic mapping and should not be used at larger scales, e.g., 1:12,000. Use the DataSources table and the DataSourceID in each Feature Class (but especially the ContactsAndFaults FeatureClass/Layer) to determine original intended scale.

The Idaho Geological Survey does not guarantee this map or digital data to be free of errors nor assume liability for interpretations made from this map or digital data, or decisions based thereon.

## Extent

<b>West</b>	-113	<b>East</b>	-112
<b>North</b>	43	<b>South</b>	42.5

## Scale Range

<b>Maximum (zoomed in)</b>	1:50,000
<b>Minimum (zoomed out)</b>	1:500,000

## ArcGIS Metadata ►

### Topics and Keywords ►

THEMES OR CATEGORIES OF THE RESOURCE `geoscientificInformation`

[Hide Topics and Keywords ▲](#)

## Citation ►

TITLE Personal and File Geodatabase (GIS data) for the Geologic Map Compilation of the Pocatello 30 x 60 Minute Quadrangle, Idaho, 1999, Idaho Geological Survey Digital Technical Report 99-2 (T-99-2)

PUBLICATION DATE 1999-07-01 00:00:00

[Hide Citation ▲](#)

## Citation Contacts ►

### RESPONSIBLE PARTY

ORGANIZATION'S NAME Idaho Geological Survey

CONTACT'S ROLE originator

### CONTACT INFORMATION ►

#### PHONE

VOICE 208-885-7991

#### ADDRESS

TYPE postal

DELIVERY POINT 875 Perimeter Dr. MS 3014

CITY Moscow

ADMINISTRATIVE AREA ID

POSTAL CODE 83844-3014

COUNTRY US

[Hide Contact information ▲](#)

[Hide Citation Contacts ▲](#)

## Resource Details ►

DATASET CHARACTER SET `utf8 - 8 bit UCS Transfer Format`

STATUS `completed`

### CREDITS

Science data credit: Paul Karl Link and Loudon R. Stanford

GIS credit: Loudon R. Stanford, William R. Schuster, Jane S. Freed, and Vance T. MacKubbin

### ARCGIS ITEM PROPERTIES

\* LOCATION `file:///\\igs-`

`rift\shared\DATABASE_MAPS\GEOLOGY_tile_project\30X60_minute\Pocatello\GIS_NCGMP09\Pocatello30x60_T-99-2\Pocatello_geol_pGDB - Copy.mdb`

\* ACCESS PROTOCOL `Local Area Network`

[Hide Resource Details ▲](#)

## Extents ►

### EXTENT

#### GEOGRAPHIC EXTENT

#### BOUNDING RECTANGLE

EXTENT TYPE `Extent used for searching`

WEST LONGITUDE `-113`

EAST LONGITUDE `-112`

NORTH LATITUDE 43  
SOUTH LATITUDE 42.5

[Hide Extents ▲](#)

## Resource Points of Contact ►

### POINT OF CONTACT

ORGANIZATION'S NAME Idaho Geological Survey  
CONTACT'S ROLE originator

#### CONTACT INFORMATION ►

PHONE  
VOICE 208-885-7991

#### ADDRESS

TYPE postal  
DELIVERY POINT 875 Perimeter Dr. MS 3014  
CITY Moscow  
ADMINISTRATIVE AREA ID  
POSTAL CODE 83844-3014  
COUNTRY US

[Hide Contact information ▲](#)

[Hide Resource Points of Contact ▲](#)

## Resource Maintenance ►

### RESOURCE MAINTENANCE

UPDATE FREQUENCY as needed

### MAINTENANCE CONTACT

ORGANIZATION'S NAME Idaho Geological Survey  
CONTACT'S ROLE originator

#### CONTACT INFORMATION ►

PHONE  
VOICE 208-885-7991

#### ADDRESS

TYPE postal  
DELIVERY POINT 875 Perimeter Dr. MS 3014  
CITY Moscow  
ADMINISTRATIVE AREA ID  
POSTAL CODE 83844-3014  
COUNTRY US

[Hide Contact information ▲](#)

[Hide Resource Maintenance ▲](#)

## Resource Constraints ►

### CONSTRAINTS

#### LIMITATIONS OF USE

Geologic map data intended for non-site-specific use. These data were compiled from 1:24,000-1:250,000 geologic mapping and should not be used at larger scales, e.g., 1:12,000. Use the DataSources table and the DataSourceID in each Feature Class (but especially the

ContactsAndFaults FeatureClass/Layer) to determine original intended scale.

The Idaho Geological Survey does not guarantee this map or digital data to be free of errors nor assume liability for interpretations made from this map or digital data, or decisions based thereon.

[Hide Resource Constraints ▲](#)

## Data Quality ►

SCOPE OF QUALITY INFORMATION ►  
RESOURCE LEVEL dataset

[Hide Scope of quality information ▲](#)

DATA QUALITY REPORT - CONCEPTUAL CONSISTENCY ►  
MEASURE DESCRIPTION

Horizontal accuracy is difficult to quantify in geologic mapping of this type. User should use original map scale (linked to DataSourcees table in this data set via "DataSource\_ID" to determine relative accuracy of groups of map objects in the data set. ---EXAMPLE OF DETERMINING H ACCURACY: 1:24k map objects in the data set have a placement h-accuracy => 80(+/-) feet (.04 inch x 2000 ft/inch @1:24,000) for a CERTAIN line type. Accuracy is proportionally less for smaller scales and even less for other line types "AuthorConfidence" field. Map data used in compilation was visually compared to original for horizontal accuracy.

EVALUATION TYPE direct internal  
EVALUATION METHOD

Geologic map data are visually checked against original map data for completeness. Accuracy is determined by at least two factors: quality of capture (digitizing) consistency and the quality of the original geology. The quality of the original geology is by far the most important for determining the quality of attribute accuracy.

[Hide Data quality report - Conceptual consistency ▲](#)

[Hide Data Quality ▲](#)

## Geoprocessing history ►

### PROCESS

PROCESS NAME  
DATE 2017-06-28 10:30:50  
TOOL LOCATION c:\program files (x86)\arcgis\desktop10.3\ArcToolbox\Toolboxes\Data Management Tools.tbx\CreatePersonalGDB  
COMMAND ISSUED  
CreatePersonalGDB  
W:\DATABASE\_MAPS\GEOLOGY\_tile\_project\30X60\_minute\Pocatello\GIS\_NCGMP09  
\Round\_4 /Pocatello\_geol\_pGDB CURRENT  
INCLUDE IN LINEAGE WHEN EXPORTING METADATA No

### PROCESS

PROCESS NAME  
DATE 2017-06-28 10:34:56  
TOOL LOCATION c:\program files (x86)\arcgis\desktop10.3\ArcToolbox\Toolboxes\Conversion Tools.tbx\FeatureClassToGeodatabase  
COMMAND ISSUED  
FeatureClassToGeodatabase

W:\DATABASE\_MAPS\GEOLOGY\_tile\_project\30X60\_minute\Pocatello\GIS\_NCGMP09  
 \Round\_4\MapUnitPolys.SHP  
 W:\DATABASE\_MAPS\GEOLOGY\_tile\_project\30X60\_minute\Pocatello\GIS\_NCGMP09  
 \Round\_4\Pocatello\_geol\_pGDB.mdb

INCLUDE IN LINEAGE WHEN EXPORTING METADATA No

PROCESS

PROCESS NAME

DATE 2017-06-28 10:35:08

TOOL LOCATION c:\program files (x86)\arcgis\desktop10.3\ArcToolbox\Toolboxes\Conversion  
 Tools.tbx\FeatureClassToGeodatabase

COMMAND ISSUED

FeatureClassToGeodatabase  
 W:\DATABASE\_MAPS\GEOLOGY\_tile\_project\30X60\_minute\Pocatello\GIS\_NCGMP09  
 \Round\_4/Contacts.shp  
 W:\DATABASE\_MAPS\GEOLOGY\_tile\_project\30X60\_minute\Pocatello\GIS\_NCGMP09  
 \Round\_4\Pocatello\_geol\_pGDB.mdb

INCLUDE IN LINEAGE WHEN EXPORTING METADATA No

PROCESS

PROCESS NAME

DATE 2017-06-28 10:35:12

TOOL LOCATION c:\program files (x86)\arcgis\desktop10.3\ArcToolbox\Toolboxes\Conversion  
 Tools.tbx\FeatureClassToGeodatabase

COMMAND ISSUED

FeatureClassToGeodatabase  
 W:\DATABASE\_MAPS\GEOLOGY\_tile\_project\30X60\_minute\Pocatello\GIS\_NCGMP09  
 \Round\_4/OrientationPoints.SHP  
 W:\DATABASE\_MAPS\GEOLOGY\_tile\_project\30X60\_minute\Pocatello\GIS\_NCGMP09  
 \Round\_4\Pocatello\_geol\_pGDB.mdb

INCLUDE IN LINEAGE WHEN EXPORTING METADATA No

PROCESS

PROCESS NAME

DATE 2017-06-28 10:35:18

TOOL LOCATION c:\program files (x86)\arcgis\desktop10.3\ArcToolbox\Toolboxes\Conversion  
 Tools.tbx\FeatureClassToGeodatabase

COMMAND ISSUED

FeatureClassToGeodatabase  
 W:\DATABASE\_MAPS\GEOLOGY\_tile\_project\30X60\_minute\Pocatello\GIS\_NCGMP09  
 \Round\_4/Faults.shp  
 W:\DATABASE\_MAPS\GEOLOGY\_tile\_project\30X60\_minute\Pocatello\GIS\_NCGMP09  
 \Round\_4\Pocatello\_geol\_pGDB.mdb

INCLUDE IN LINEAGE WHEN EXPORTING METADATA No

PROCESS

PROCESS NAME

DATE 2017-06-28 10:35:20

TOOL LOCATION c:\program files (x86)\arcgis\desktop10.3\ArcToolbox\Toolboxes\Conversion  
 Tools.tbx\FeatureClassToGeodatabase

COMMAND ISSUED

FeatureClassToGeodatabase  
 W:\DATABASE\_MAPS\GEOLOGY\_tile\_project\30X60\_minute\Pocatello\GIS\_NCGMP09  
 \Round\_4/GeologicPoints.SHP  
 W:\DATABASE\_MAPS\GEOLOGY\_tile\_project\30X60\_minute\Pocatello\GIS\_NCGMP09  
 \Round\_4\Pocatello\_geol\_pGDB.mdb

INCLUDE IN LINEAGE WHEN EXPORTING METADATA No

PROCESS

PROCESS NAME

DATE 2017-06-28 10:35:21

TOOL LOCATION c:\program files (x86)\arcgis\desktop10.3\ArcToolbox\Toolboxes\Conversion  
 Tools.tbx\FeatureClassToGeodatabase

COMMAND ISSUED

FeatureClassToGeodatabase

W:\DATABASE\_MAPS\GEOLOGY\_tile\_project\30X60\_minute\Pocatello\GIS\_NCGMP09  
 \Round\_4\Dikes.shp  
 W:\DATABASE\_MAPS\GEOLOGY\_tile\_project\30X60\_minute\Pocatello\GIS\_NCGMP09  
 \Round\_4\Pocatello\_geol\_pGDB.mdb

INCLUDE IN LINEAGE WHEN EXPORTING METADATA No

PROCESS

PROCESS NAME

DATE 2017-06-28 10:35:23

TOOL LOCATION c:\program files (x86)\arcgis\desktop10.3\ArcToolbox\Toolboxes\Conversion  
 Tools.tbx\FeatureClassToGeodatabase

COMMAND ISSUED

FeatureClassToGeodatabase  
 W:\DATABASE\_MAPS\GEOLOGY\_tile\_project\30X60\_minute\Pocatello\GIS\_NCGMP09  
 \Round\_4\GeologicLines.SHP  
 W:\DATABASE\_MAPS\GEOLOGY\_tile\_project\30X60\_minute\Pocatello\GIS\_NCGMP09  
 \Round\_4\Pocatello\_geol\_pGDB.mdb

INCLUDE IN LINEAGE WHEN EXPORTING METADATA No

PROCESS

PROCESS NAME

DATE 2017-06-28 10:35:29

TOOL LOCATION c:\program files (x86)\arcgis\desktop10.3\ArcToolbox\Toolboxes\Conversion  
 Tools.tbx\FeatureClassToGeodatabase

COMMAND ISSUED

FeatureClassToGeodatabase  
 W:\DATABASE\_MAPS\GEOLOGY\_tile\_project\30X60\_minute\Pocatello\GIS\_NCGMP09  
 \Round\_4\CartographicLines.SHP  
 W:\DATABASE\_MAPS\GEOLOGY\_tile\_project\30X60\_minute\Pocatello\GIS\_NCGMP09  
 \Round\_4\Pocatello\_geol\_pGDB.mdb

INCLUDE IN LINEAGE WHEN EXPORTING METADATA No

PROCESS

PROCESS NAME

DATE 2017-06-28 10:35:44

TOOL LOCATION c:\program files (x86)\arcgis\desktop10.3\ArcToolbox\Toolboxes\Conversion  
 Tools.tbx\FeatureClassToGeodatabase

COMMAND ISSUED

FeatureClassToGeodatabase  
 W:\DATABASE\_MAPS\GEOLOGY\_tile\_project\30X60\_minute\Pocatello\GIS\_NCGMP09  
 \Round\_4/ContactsAndFaults.SHP  
 W:\DATABASE\_MAPS\GEOLOGY\_tile\_project\30X60\_minute\Pocatello\GIS\_NCGMP09  
 \Round\_4\Pocatello\_geol\_pGDB.mdb

INCLUDE IN LINEAGE WHEN EXPORTING METADATA No

PROCESS

PROCESS NAME

DATE 2017-06-28 10:37:12

TOOL LOCATION c:\program files (x86)\arcgis\desktop10.3\ArcToolbox\Toolboxes\Conversion  
 Tools.tbx\TableToGeodatabase

COMMAND ISSUED

TableToGeodatabase  
 W:\DATABASE\_MAPS\GEOLOGY\_tile\_project\30X60\_minute\Pocatello\GIS\_NCGMP09  
 \Round\_4/attributes-GDB.mdb/C  
 W:\DATABASE\_MAPS\GEOLOGY\_tile\_project\30X60\_minute\Pocatello\GIS\_NCGMP09  
 \Round\_4\Pocatello\_geol\_pGDB.mdb

INCLUDE IN LINEAGE WHEN EXPORTING METADATA No

PROCESS

PROCESS NAME

DATE 2017-06-28 10:37:16

TOOL LOCATION c:\program files (x86)\arcgis\desktop10.3\ArcToolbox\Toolboxes\Conversion  
 Tools.tbx\TableToGeodatabase

COMMAND ISSUED

TableToGeodatabase

W:\DATABASE\_MAPS\GEOLOGY\_tile\_project\30X60\_minute\Pocatello\GIS\_NCGMP09  
 \Round\_4/attributes-GDB.mdb/CAF  
 W:\DATABASE\_MAPS\GEOLOGY\_tile\_project\30X60\_minute\Pocatello\GIS\_NCGMP09  
 \Round\_4/Pocatello\_geol\_pGDB.mdb

INCLUDE IN LINEAGE WHEN EXPORTING METADATA No

PROCESS

PROCESS NAME

DATE 2017-06-28 10:37:19

TOOL LOCATION c:\program files (x86)\arcgis\desktop10.3\ArcToolbox\Toolboxes\Conversion  
 Tools.tbx\TableToGeodatabase

COMMAND ISSUED

TableToGeodatabase  
 W:\DATABASE\_MAPS\GEOLOGY\_tile\_project\30X60\_minute\Pocatello\GIS\_NCGMP09  
 \Round\_4/attributes-GDB.mdb/CL  
 W:\DATABASE\_MAPS\GEOLOGY\_tile\_project\30X60\_minute\Pocatello\GIS\_NCGMP09  
 \Round\_4/Pocatello\_geol\_pGDB.mdb

INCLUDE IN LINEAGE WHEN EXPORTING METADATA No

PROCESS

PROCESS NAME

DATE 2017-06-28 10:37:20

TOOL LOCATION c:\program files (x86)\arcgis\desktop10.3\ArcToolbox\Toolboxes\Conversion  
 Tools.tbx\TableToGeodatabase

COMMAND ISSUED

TableToGeodatabase  
 W:\DATABASE\_MAPS\GEOLOGY\_tile\_project\30X60\_minute\Pocatello\GIS\_NCGMP09  
 \Round\_4/attributes-GDB.mdb/D  
 W:\DATABASE\_MAPS\GEOLOGY\_tile\_project\30X60\_minute\Pocatello\GIS\_NCGMP09  
 \Round\_4/Pocatello\_geol\_pGDB.mdb

INCLUDE IN LINEAGE WHEN EXPORTING METADATA No

PROCESS

PROCESS NAME

DATE 2017-06-28 10:37:23

TOOL LOCATION c:\program files (x86)\arcgis\desktop10.3\ArcToolbox\Toolboxes\Conversion  
 Tools.tbx\TableToGeodatabase

COMMAND ISSUED

TableToGeodatabase  
 W:\DATABASE\_MAPS\GEOLOGY\_tile\_project\30X60\_minute\Pocatello\GIS\_NCGMP09  
 \Round\_4/attributes-GDB.mdb/F  
 W:\DATABASE\_MAPS\GEOLOGY\_tile\_project\30X60\_minute\Pocatello\GIS\_NCGMP09  
 \Round\_4/Pocatello\_geol\_pGDB.mdb

INCLUDE IN LINEAGE WHEN EXPORTING METADATA No

PROCESS

PROCESS NAME

DATE 2017-06-28 10:37:24

TOOL LOCATION c:\program files (x86)\arcgis\desktop10.3\ArcToolbox\Toolboxes\Conversion  
 Tools.tbx\TableToGeodatabase

COMMAND ISSUED

TableToGeodatabase  
 W:\DATABASE\_MAPS\GEOLOGY\_tile\_project\30X60\_minute\Pocatello\GIS\_NCGMP09  
 \Round\_4/attributes-GDB.mdb/GL  
 W:\DATABASE\_MAPS\GEOLOGY\_tile\_project\30X60\_minute\Pocatello\GIS\_NCGMP09  
 \Round\_4/Pocatello\_geol\_pGDB.mdb

INCLUDE IN LINEAGE WHEN EXPORTING METADATA No

PROCESS

PROCESS NAME

DATE 2017-06-28 10:37:26

TOOL LOCATION c:\program files (x86)\arcgis\desktop10.3\ArcToolbox\Toolboxes\Conversion  
 Tools.tbx\TableToGeodatabase

COMMAND ISSUED

TableToGeodatabase



W:\DATABASE\_MAPS\GEOLOGY\_tile\_project\30X60\_minute\Pocatello\GIS\_NCGMP09  
 \Round\_4/attributes-GDB.mdb/GP  
 W:\DATABASE\_MAPS\GEOLOGY\_tile\_project\30X60\_minute\Pocatello\GIS\_NCGMP09  
 \Round\_4/Pocatello\_geol\_pGDB.mdb

INCLUDE IN LINEAGE WHEN EXPORTING METADATA No

PROCESS

PROCESS NAME

DATE 2017-06-28 10:37:27

TOOL LOCATION c:\program files (x86)\arcgis\desktop10.3\ArcToolbox\Toolboxes\Conversion  
 Tools.tbx\TableToGeodatabase

COMMAND ISSUED

TableToGeodatabase  
 W:\DATABASE\_MAPS\GEOLOGY\_tile\_project\30X60\_minute\Pocatello\GIS\_NCGMP09  
 \Round\_4/attributes-GDB.mdb/MUP  
 W:\DATABASE\_MAPS\GEOLOGY\_tile\_project\30X60\_minute\Pocatello\GIS\_NCGMP09  
 \Round\_4/Pocatello\_geol\_pGDB.mdb

INCLUDE IN LINEAGE WHEN EXPORTING METADATA No

PROCESS

PROCESS NAME

DATE 2017-06-28 10:37:30

TOOL LOCATION c:\program files (x86)\arcgis\desktop10.3\ArcToolbox\Toolboxes\Conversion  
 Tools.tbx\TableToGeodatabase

COMMAND ISSUED

TableToGeodatabase  
 W:\DATABASE\_MAPS\GEOLOGY\_tile\_project\30X60\_minute\Pocatello\GIS\_NCGMP09  
 \Round\_4/attributes-GDB.mdb/OP  
 W:\DATABASE\_MAPS\GEOLOGY\_tile\_project\30X60\_minute\Pocatello\GIS\_NCGMP09  
 \Round\_4/Pocatello\_geol\_pGDB.mdb

INCLUDE IN LINEAGE WHEN EXPORTING METADATA No

PROCESS

PROCESS NAME

DATE 2017-06-28 10:37:31

TOOL LOCATION c:\program files (x86)\arcgis\desktop10.3\ArcToolbox\Toolboxes\Conversion  
 Tools.tbx\TableToGeodatabase

COMMAND ISSUED

TableToGeodatabase  
 W:\DATABASE\_MAPS\GEOLOGY\_tile\_project\30X60\_minute\Pocatello\GIS\_NCGMP09  
 \Round\_4/attributes-GDB.mdb/SOURCESFile  
 W:\DATABASE\_MAPS\GEOLOGY\_tile\_project\30X60\_minute\Pocatello\GIS\_NCGMP09  
 \Round\_4/Pocatello\_geol\_pGDB.mdb

INCLUDE IN LINEAGE WHEN EXPORTING METADATA No

PROCESS

PROCESS NAME

DATE 2017-06-28 10:37:32

TOOL LOCATION c:\program files (x86)\arcgis\desktop10.3\ArcToolbox\Toolboxes\Conversion  
 Tools.tbx\TableToGeodatabase

COMMAND ISSUED

TableToGeodatabase  
 W:\DATABASE\_MAPS\GEOLOGY\_tile\_project\30X60\_minute\Pocatello\GIS\_NCGMP09  
 \Round\_4/attributes-GDB.mdb/XGLOSSARYNOTFOUND  
 W:\DATABASE\_MAPS\GEOLOGY\_tile\_project\30X60\_minute\Pocatello\GIS\_NCGMP09  
 \Round\_4/Pocatello\_geol\_pGDB.mdb

INCLUDE IN LINEAGE WHEN EXPORTING METADATA No

PROCESS

PROCESS NAME

DATE 2017-06-28 10:37:34

TOOL LOCATION c:\program files (x86)\arcgis\desktop10.3\ArcToolbox\Toolboxes\Conversion  
 Tools.tbx\TableToGeodatabase

COMMAND ISSUED

TableToGeodatabase

W:\DATABASE\_MAPS\GEOLOGY\_tile\_project\30X60\_minute\Pocatello\GIS\_NCGMP09  
 \Round\_4\attributes-GDB.mdb/XIGSsourceNOTFOUND

W:\DATABASE\_MAPS\GEOLOGY\_tile\_project\30X60\_minute\Pocatello\GIS\_NCGMP09  
 \Round\_4\Pocatello\_geol\_pGDB.mdb

INCLUDE IN LINEAGE WHEN EXPORTING METADATA No

#### PROCESS

##### PROCESS NAME

DATE 2017-06-28 10:47:45

TOOL LOCATION c:\program files (x86)\arcgis\desktop10.3\ArcToolbox\Toolboxes\Data Management  
 Tools.tbx\Compact

##### COMMAND ISSUED

Compact W:\DATABASE\_MAPS\GEOLOGY\_tile\_project\30X60\_minute\Pocatello\GIS\_NCGMP09  
 \Round\_4\Pocatello\_geol\_pGDB.mdb

INCLUDE IN LINEAGE WHEN EXPORTING METADATA No

[Hide Geoprocessing history ▲](#)

## Distribution ►

#### DISTRIBUTOR ►

##### CONTACT INFORMATION

ORGANIZATION'S NAME Idaho Geological Survey

CONTACT'S ROLE originator

##### CONTACT INFORMATION ►

##### PHONE

VOICE 208-885-7991

##### ADDRESS

TYPE postal

DELIVERY POINT 875 Perimeter Dr. MS 3014

CITY Moscow

ADMINISTRATIVE AREA ID

POSTAL CODE 83844-3014

COUNTRY US

[Hide Contact information ▲](#)

[Hide Distributor ▲](#)

#### DISTRIBUTION FORMAT

NAME ArcGIS Personal Geodatabase

#### DISTRIBUTION FORMAT

NAME Shape Files

#### TRANSFER OPTIONS

UNITS OF DISTRIBUTION Geologic Map Compilation of the Pocatello 30 x 60 Minute Quadrangle, Idaho

#### ONLINE SOURCE

LOCATION [http://www.idahogeology.org/Products/reverselook.asp?](http://www.idahogeology.org/Products/reverselook.asp?switch=title&value=Geologic_Map_Compilation_of_the_Pocatello_30_x_60_Minute_Quadrangle,_Idaho)

[switch=title&value=Geologic\\_Map\\_Compilation\\_of\\_the\\_Pocatello\\_30\\_x\\_60\\_Minute\\_Quadrangle,\\_Idaho](http://www.idahogeology.org/Products/reverselook.asp?switch=title&value=Geologic_Map_Compilation_of_the_Pocatello_30_x_60_Minute_Quadrangle,_Idaho)

[Hide Distribution ▲](#)

## Fields ►

#### OVERVIEW DESCRIPTION ►

##### ENTITY AND ATTRIBUTE OVERVIEW

See DataDictionary table in this dataset for complete listing of fields and attributes

[Hide Overview Description ▲](#)

[Hide Fields ▲](#)

## Metadata Details ►

METADATA CHARACTER SET utf8 - 8 bit UCS Transfer Format

SCOPE OF THE DATA DESCRIBED BY THE METADATA dataset

LAST UPDATE 2017-07-07

### ARCGIS METADATA PROPERTIES

METADATA FORMAT ArcGIS 1.0

METADATA STYLE FGDC CSDGM Metadata

STANDARD OR PROFILE USED TO EDIT METADATA FGDC

CREATED IN ARCGIS FOR THE ITEM 2017-07-07 10:28:24

LAST MODIFIED IN ARCGIS FOR THE ITEM 2017-07-25 12:39:13

### AUTOMATIC UPDATES

HAVE BEEN PERFORMED No

### ITEM LOCATION HISTORY

ITEM COPIED OR MOVED 2017-07-07 10:28:24

FROM W:\DATABASE\_MAPS\GEOLOGY\_tile\_project\30X60\_minute\Pocatello\GIS\_NCGMP09  
\Round\_4\Pocatello\_geol\_pGDB.mdb

TO \\igs-

riff\shared\DATABASE\_MAPS\GEOLOGY\_tile\_project\30X60\_minute\Pocatello\GIS\_NCGMP09  
\Pocatello30x60\_T-99-2\Pocatello\_geol\_pGDB - Copy.mdb

[Hide Metadata Details ▲](#)

## Metadata Contacts ►

### METADATA CONTACT

ORGANIZATION'S NAME Idaho Geological Survey

CONTACT'S ROLE originator

### CONTACT INFORMATION ►

#### PHONE

VOICE 208-885-7991

#### ADDRESS

TYPE postal

DELIVERY POINT 875 Perimeter Dr. MS 3014

CITY Moscow

ADMINISTRATIVE AREA ID

POSTAL CODE 83844-3014

COUNTRY US

[Hide Contact information ▲](#)

[Hide Metadata Contacts ▲](#)

## Metadata Maintenance ►

### MAINTENANCE

UPDATE FREQUENCY as needed

### MAINTENANCE CONTACT

ORGANIZATION'S NAME Idaho Geological Survey  
CONTACT'S ROLE originator

### CONTACT INFORMATION ►

#### PHONE

VOICE 208-885-7991

#### ADDRESS

TYPE postal  
DELIVERY POINT 875 Perimeter Dr. MS 3014  
CITY Moscow  
ADMINISTRATIVE AREA ID  
POSTAL CODE 83844-3014  
COUNTRY US

[Hide Contact information ▲](#)

[Hide Metadata Maintenance ▲](#)

## Metadata Constraints ►

### CONSTRAINTS

#### LIMITATIONS OF USE

Geologic map data intended for non-site-specific use. These data were compiled from 1:24,000-1:100,000 geologic mapping and should not be used at larger scales, e.g., 1:12,000. Use the DataSources table and the DataSourceID in each Feature Class (but especially the ContactsAndFaults FeatureClass/Layer) to determine original intended scale.

The Idaho Geological Survey does not guarantee this map or digital data to be free of errors nor assume liability for interpretations made from this map or digital data, or decisions based thereon.

[Hide Metadata Constraints ▲](#)

## Thumbnail and Enclosures ►

### THUMBNAIL

THUMBNAIL TYPE JPG

[Hide Thumbnail and Enclosures ▲](#)

## FGDC Metadata (read-only) ►

### Entities and Attributes ►

#### OVERVIEW DESCRIPTION

##### ENTITY AND ATTRIBUTE OVERVIEW

See DataDictionary table in this dataset for complete listing of fields and attributes

[Hide Entities and Attributes ▲](#)