

GEOLOGY AND HYDROTHERMAL ALTERATION MAPS OF LOW-GRADE GOLD OCCURRENCES
 NORTH OF WEISER, INCLUDING THE BLUE DOG PROSPECT AREA,
 WASHINGTON COUNTY, IDAHO

by
 Kathryn S. Killman
 1982

PLATE I

Plates 1 and 2 in Killman, K. S., 1981, Geology and hydrothermal alteration
 of low-grade gold occurrences north of Weiser, Washington County, Idaho:
 University of Idaho M.S. thesis.

Geology and Hydrothermal Alteration Map

Low-Grade Gold Occurrences

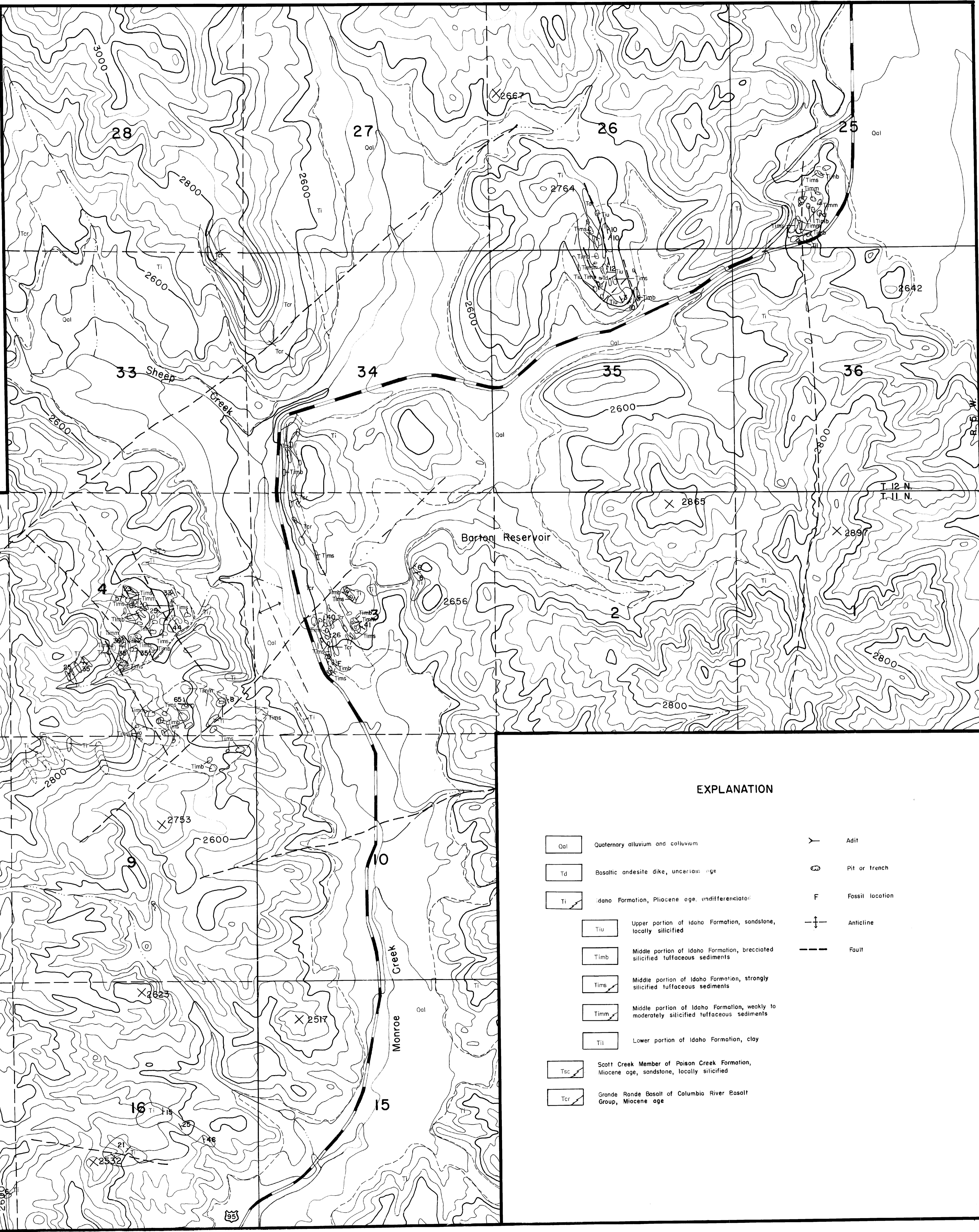
North of Weiser

Washington County, Idaho

Scale 1" = 1000'



K. S. KILLMAN MAY 1981



EXPLANATION

- | | | | |
|------|--|---|-----------------|
| Qal | Quaternary alluvium and colluvium | Y | Adit |
| Td | Basaltic andesite dike, uncertain age | O | Pit or trench |
| Ti | Idaho Formation, Pliocene age, undifferentiated | F | Fossil location |
| Tiu | Upper portion of Idaho Formation, sandstone, locally silicified | A | Anticline |
| Timb | Middle portion of Idaho Formation, brecciated silicified tuffaceous sediments | F | Fault |
| Tims | Middle portion of Idaho Formation, strongly silicified tuffaceous sediments | | |
| Timn | Middle portion of Idaho Formation, weakly to moderately silicified tuffaceous sediments | | |
| Tii | Lower portion of Idaho Formation, clay | | |
| Tsc | Scott Creek Member of Poison Creek Formation, Miocene age, sandstone, locally silicified | | |
| Tcr | Grande Ronde Basalt of Columbia River Basalt Group, Miocene age | | |

PLATE 2

Plates 1 and 2 in Killman, K. S., 1981, Geology and hydrothermal alteration
 of low-grade gold occurrences north of Weiser, Washington County, Idaho:
 University of Idaho M.S. thesis.

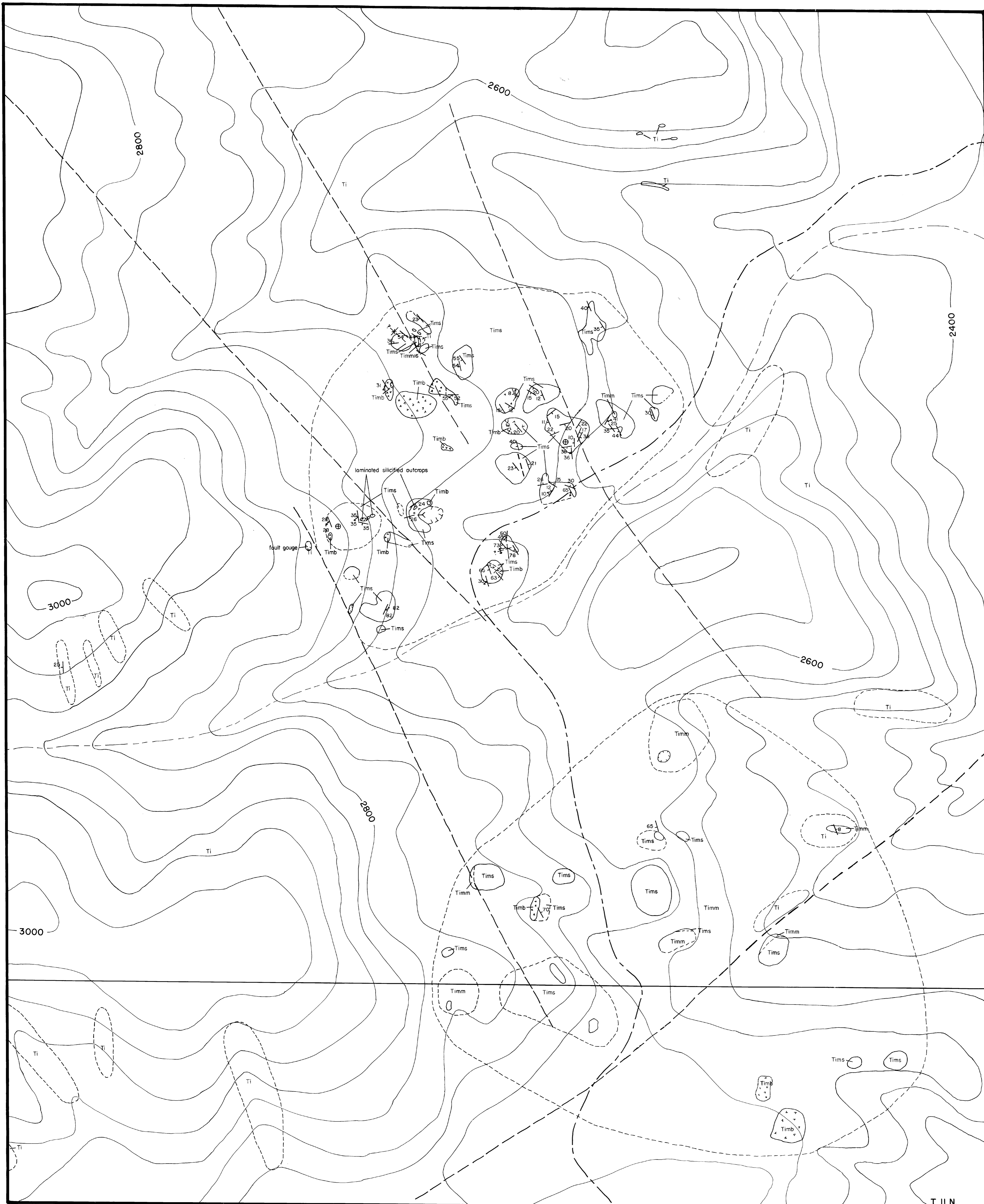
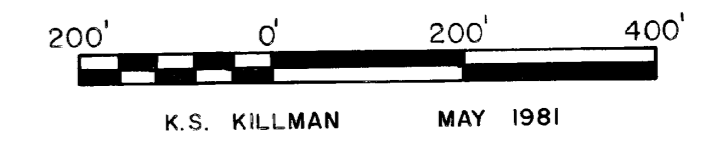
Geology and Hydrothermal Alteration Map

Blue Dog Prospect Area

Washington County, Idaho



Scale 1" = 200'



EXPLANATION

- | | |
|--|---|
| | Idaho Formation, Pliocene age, undifferentiated |
| | Middle portion of Idaho Formation, brecciated silicified tuffaceous sediments |
| | Middle portion of Idaho Formation, strongly silicified tuffaceous sediments |
| | Middle portion of Idaho Formation, weakly to moderately silicified tuffaceous sediments |
| | Fault |
| | Road |
| | Intermittent stream |
| | Adit |
| | Dump |
| | Pit or trench |
| | Fault plane, showing trend and plunge of slickensides |