

# Geologic Map and Cross Sections of the Mount Putnam Area, Bannock and Caribou Counties, Idaho

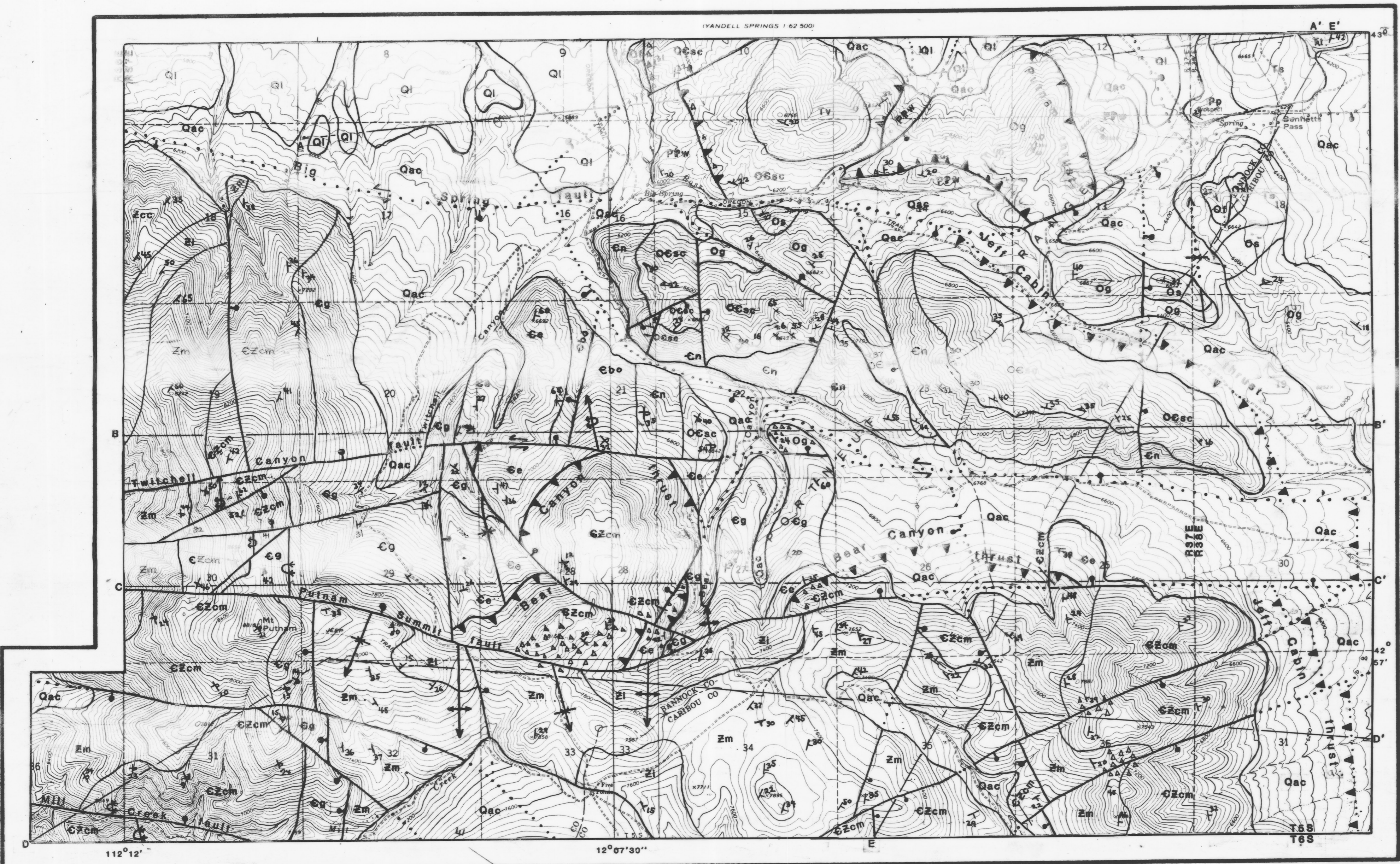
Kevin R. Pogue

Technical Report 84-10  
1984

Idaho Geological Survey  
University of Idaho  
Moscow, Idaho 83844-3014

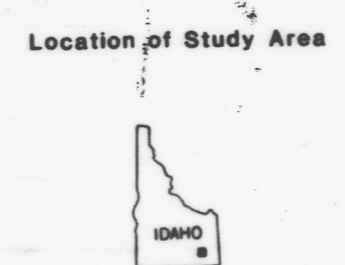
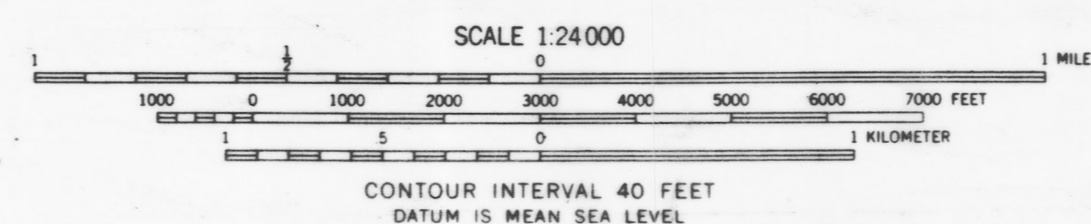
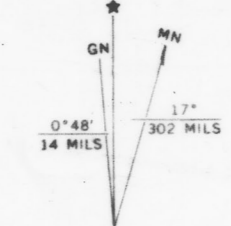
# GEOLOGIC MAP OF MOUNT PUTNAM AREA, BANNOCK AND CARIBOU COUNTIES, IDAHO

## EXPLANATION

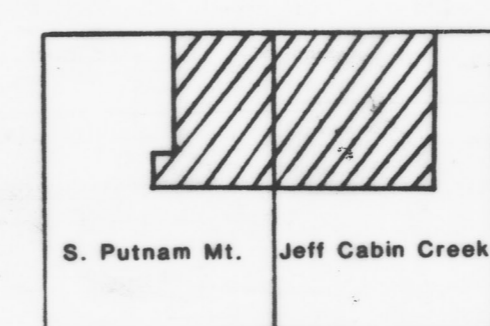


|               |      |  |     |  |
|---------------|------|--|-----|--|
| Quaternary    | Qac  | alluvium and colluvium                               | — — | contact                                    |
|               | Ql   | loess  | — — | fault                                      |
|               | Ts   | stream gravels                                       | — — | fault and half on downthrown side          |
| Tertiary      | Tv   | volcanics<br>rhyolitic ash-flow tuff                 | — — | fault showing relative horizontal movement |
| Triassic      | Tt   | Thaynes Formation                                    | — — | fault concealed                            |
| Permian       | Pp   | Phosphoria Formation                                 | — — | thrust fault sawtooth on upper plate       |
| Pennsylvanian | Ppw  | Wells Formation                                      | — — | thrust fault concealed                     |
| Mississippian | Mmc  | Moose Canyon Limestone<br>cross section only         | — — | anticline showing direction of plunge      |
|               | Of   | Fish Haven Dolomite                                  | — — | syncline showing direction of plunge       |
| Ordovician    | Os   | Swan Peak Formation                                  | — — | overturned anticline                       |
|               | Og   | Garden City Limestone                                | — — | overturned syncline                        |
|               | Oesc | St. Charles Formation                                | — — | strike and dip of bedding                  |
|               | Cn   | Nounan Formation                                     | — — | zone of brecciation                        |
| Cambrian      | Ce   | Elkhead Limestone                                    |     |  |
|               | Cg   | Gibson Jack Formation                                |     |  |
|               | Pzu  | Paleozoic Undifferentiated<br>cross section only     |     |  |
|               | Czcm | Camelback Mountain Quartzite                         |     |  |
|               | Zm   | Mutual Formation                                     |     |  |
| Precambrian Z | Zi   | Inkom Formation                                      |     |  |
|               | Zcc  | Caddy Canyon Quartzite                               |     |  |
|               | Zu   | Precambrian Z Undifferentiated<br>cross section only |     |  |

Geologic mapping by Kevin R. Pogue 1982-1983  
Idaho State University M.S. thesis 1984



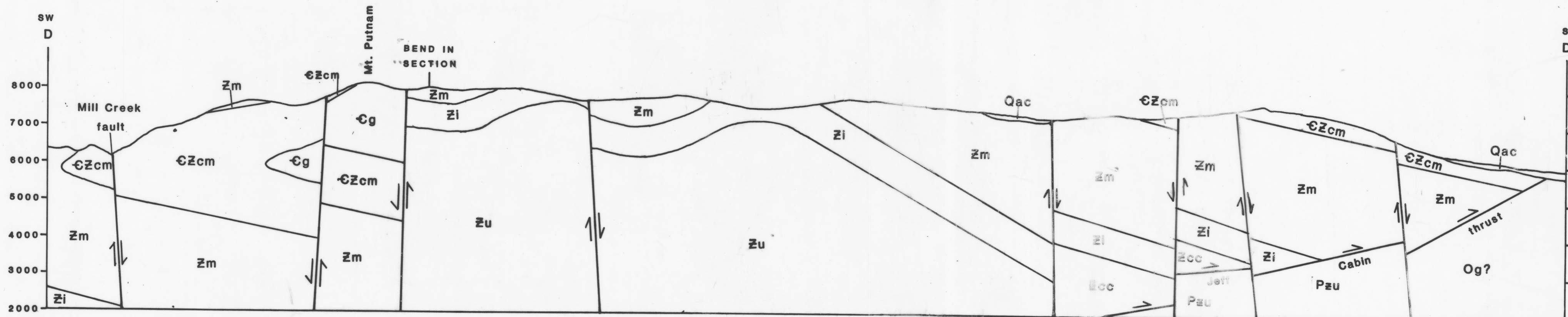
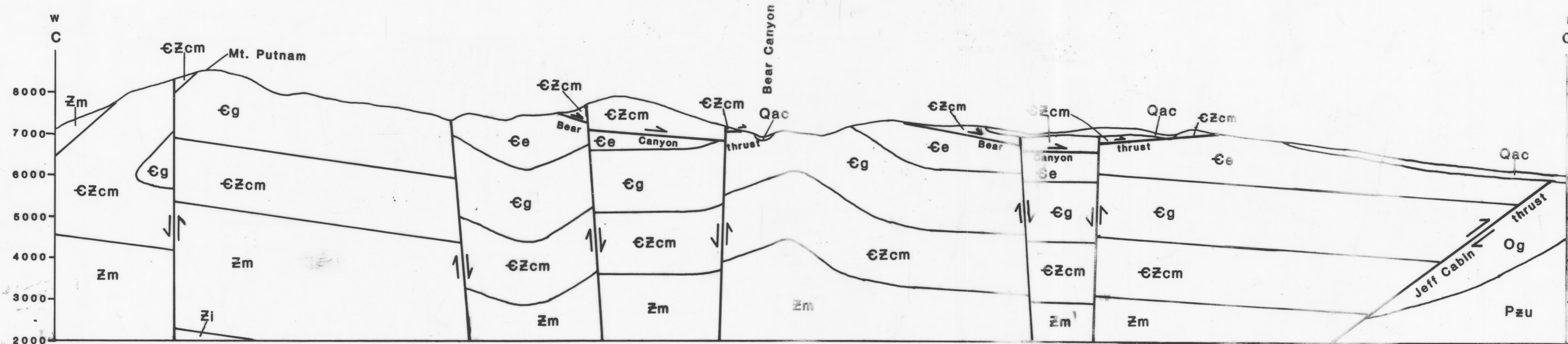
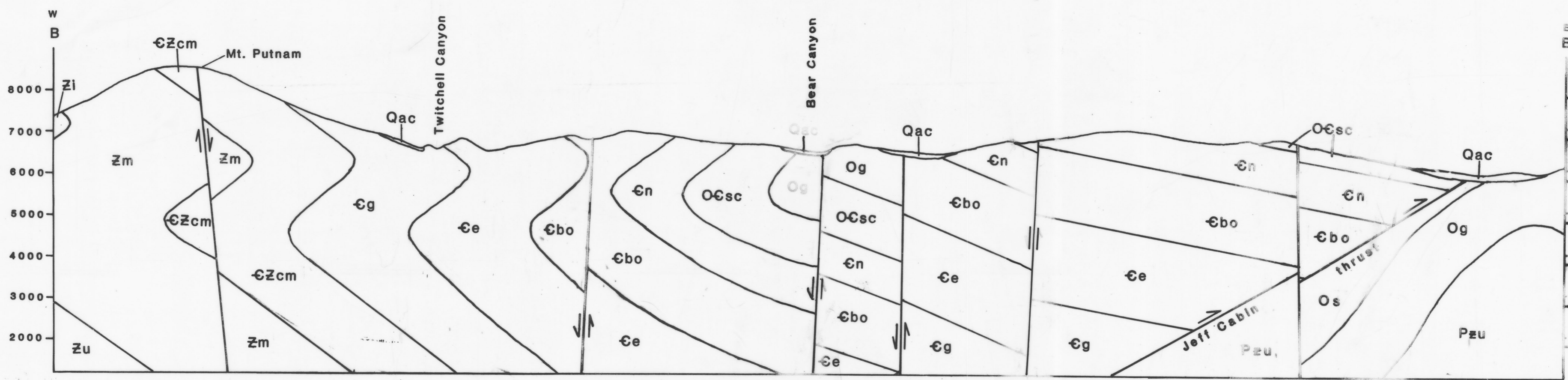
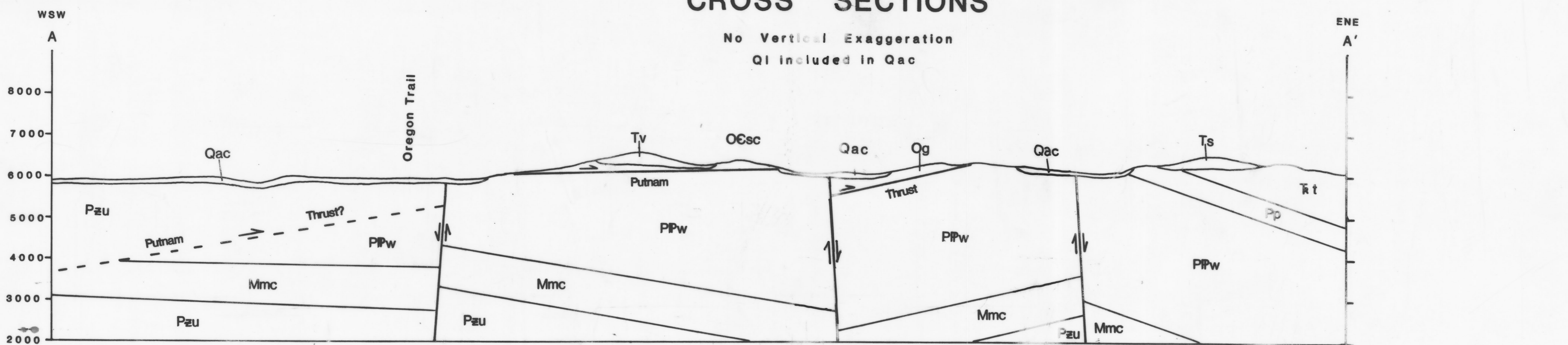
A—A'  
cross section line  
see plate 2



7.5 min. Quadrangles

# CROSS SECTIONS

No Vertical Exaggeration  
 Q1 included in Qac



## EXPLANATION

all other symbols on Plate 1

